

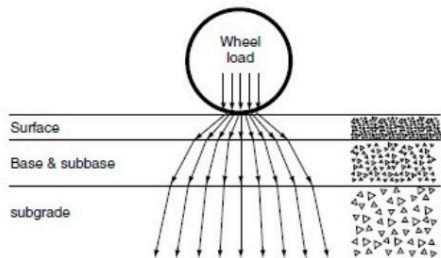
THE TECHNICAL INFO

CGRC has engaged geotechnical engineers to design pavement options for 25, 50, 100-year pavement design life. Council Engineers assessed the proposed designs and found the 100-year design life to be approximately 300% more cost effective for long term maintenance in this instance.

By constructing suitable depth road pavement this can prevent wheel loading of vehicles from impacting the underlying natural subgrade material often causing defects in roads such as potholes and cracking.

By extending road pavement underneath kerb assets, this provides a solid foundation for the assets which in turn will alleviate commonly found defects such as sinking, overturning and cracking.

Load distribution in asphalt pavement



Asphalt pav. is designed to provide sufficient thickness to distribute the applied load with depth

THE BENEFITS

This project will extend the life & use of Hovell Street as heavy transport movements increase.

Making the road surface safer for all motorists. The project will address drainage issues.

Overall, the project will save ratepayer funds with ongoing maintenance & repair issues alleviated.

Contact Us



Phone
1300 459 689



Website
www.cgrc.nsw.gov.au



Address
PO Box 420
Cootamundra NSW 2590

HOVELL STREET UPGRADE PROJECT TIME LINE



**COOTAMUNDRA-
GUNDAGAI** REGIONAL
COUNCIL



**COOTAMUNDRA-
GUNDAGAI** REGIONAL
COUNCIL

STAGE 1

Closure of Campbell Street,
between
Sutton & Hovell Streets
from
10 March – 28 March 2025

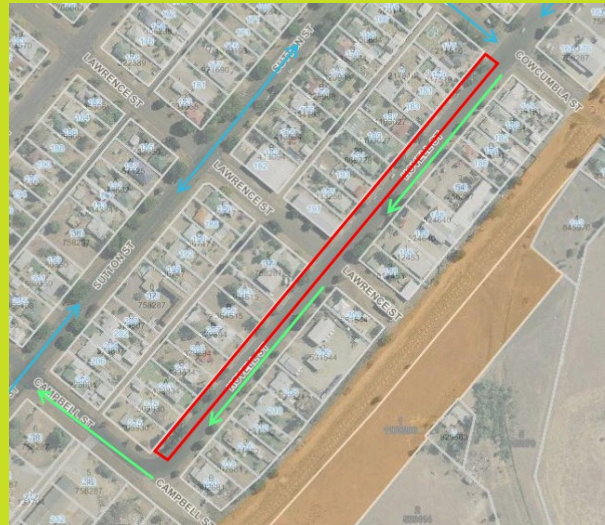


Underground services on
Campbell Street relocated.

Remove existing road and
kerb. Replace road
pavement, kerb and seal.

STAGE 2

Partial closure of Hovell Street
between Campbell and
Cowcumbra Streets. Northbound.
from
31 March – 30 April 2025

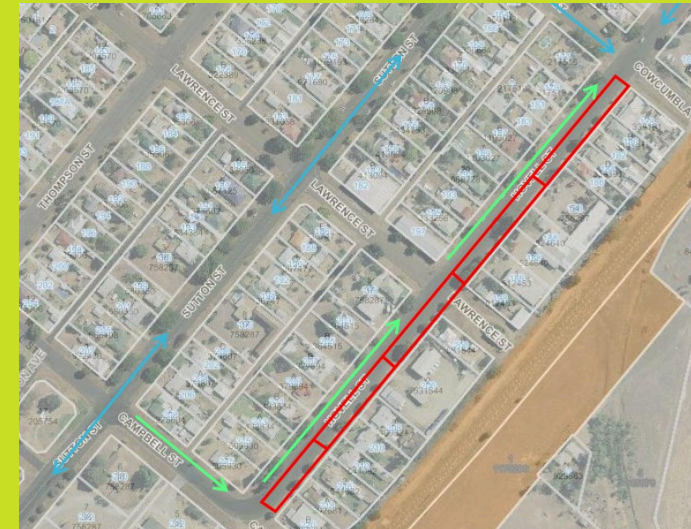


Underground services on
Hovell Street relocated.

Remove existing
northbound road and kerb.
Replace road pavement,
kerb and seal. Access to
properties encouraged via
back laneway access.

STAGE 3

Patial closure of Hovell Street
between Campbell and
Cowcumbra Streets. Southbound.
from
1 May – 18 June 2025



Remove existing
southbound road and
kerb. Replace road
pavement, kerb and seal
in substages. Stage
construction to minimise
impact on residences
without alternate property
access.

Dates are subject to
weather conditions.
Please obey traffic
signals.