

-FOR IMMEDIATE RELEASE-

20 JUNE 2023:

UNDERSTANDING ROAD RULES

Cootamundra-Gundagai Regional Council (CGRC) is committed to supplying residents with information relating to road safety. Council through its Road Safety Officer (RSO), run a number of Road Safety initiatives and programs throughout the year.

Council has now added a page to the CGRC Website – Know Your Road Rules. The page has links to videos clips, the Top 10 misunderstood road rules in NSW, and a host of information on Dividing Lines.

One subject, crossing a double dividing line, outlines what is allowable, which has caused some confusion amongst residents.

Information supplied by TfNSW at this link: [Road lines and markings | NSW Government](#)

Double dividing line:

You can cross double unbroken lines to enter or leave the road by the shortest route.

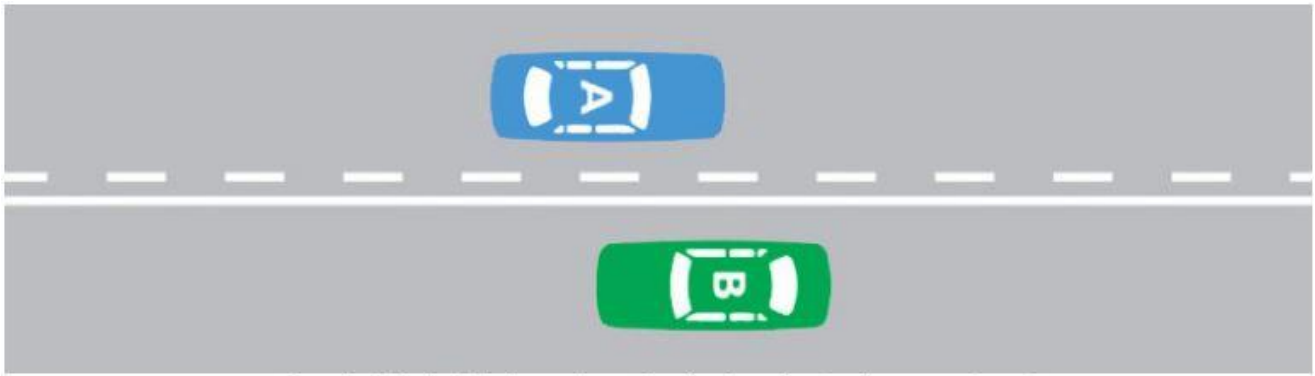


Road with double unbroken dividing line

Unbroken & broken dividing lines:

You can cross double lines with a broken line close to you to:

- overtake another vehicle
- make a U-turn
- enter or leave the road
- angle park on the opposite side of the road (without making a U-turn).



Road with double line where the broken line is closer to Car A

For more information visit [KNOW YOUR ROAD RULES | Cootamundra Gundagai Regional Council \(nsw.gov.au\)](https://www.nsw.gov.au/road-rules)

-END-

Cootamundra-Gundagai Regional Council
www.cgrc.nsw.gov.au

For further media information contact:
Cootamundra-Gundagai Regional Council on
1300 459 689

