

04 Strategic Planning

Our Vision

A vision has been created that seeks to reflect the aspirations of the community in relation to planning for recreation development. The achievement of this vision requires partnerships between Council and the wider Cootamundra-Gundagai community, state and federal organisations, agencies and governments.



“A healthy community through thriving recreational opportunities supported by active towns and villages with high quality facilities, clubs and programs”.

Partnerships

Sport and recreation planning is multifaceted and interrelated. Consideration needs to be given to the three major components of planning; facilities, clubs and programs. These components cannot be considered in isolation.

The **facilities** component includes:

- Planning (strategies, feasibility studies, master plans, reviews)
- Delivery (upgrades, new facilities, repurposing, collocation, multi-purpose, accessible)
- Management (governance, leasing, programming, asset management, maintenance)

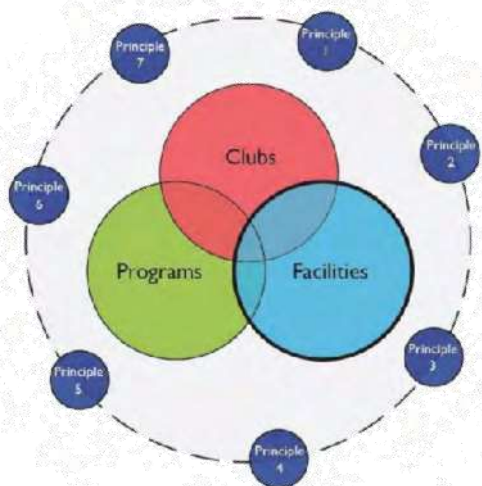
The **clubs/user groups** component includes:

- Club development
- Communication
- Engagement
- Accessibility
- Volunteering
- Partnerships
- Training and development

The **programs** component includes:

- Special population groups
- Events, programs and services
- Resourcing
- Communication and marketing
- Inclusion
- Pathways

The planning principles, as outlined in the previous section are relevant to the three components of sport and recreation planning, facilitate decision making and prioritisation and underpin the Strategy and Action Plan. The needs of the Cootamundra-Gundagai community are instrumental also in informing the plan.



04 Strategic Planning

Strategy and Action Plan

The following tables detail the strategies and actions for developing recreation in the Cootamundra-Gundagai Regional Council. Each of the three components of sport and recreation planning; facilities, clubs and programs, have been addressed through a series of strategies and actions which are guided by this Plan's principles and strive to achieve the vision for recreation in the Cootamundra-Gundagai Regional Council.

The Strategy and Action Plan has been prepared with the intention of remaining flexible in order to adapt to dynamic influences such as community needs, funding opportunities and technological advances.

Strategies and actions for Cootamundra-Gundagai and the outlying villages are illustrated on the profile pages and subsequent tables.

Each strategy is priorities and a rationale for the strategy is also provided. Listed actions have an identified time frame, partners and an estimate of resource needs.

In assessing the priority for each of the strategies, the following factors were taken into consideration:

- Alignment with the Vision
- Alignment to Strategic Plans
- Identified Need
- Community Support
- Level of Planning Undertaken
- Feasibility
- Safety

The Action Plan provides the following broad timeframes:

- Immediate (first 12 months and includes little wins and already planned and funded projects)
- Short (1 – 3 years)
- Medium (4 – 7 years)
- Longer (8+ years)
- Ongoing

The timeframe identified for the completion of each action is indicative and should be reviewed annually. The staging of investment will allow maximum value from the existing facilities as well as the sustainable provision of new facilities, services and programs.

Partners have been identified who may be able to assist Council with the delivery of the action. It is acknowledged that without partner support many of the actions identified will not likely be achieved. The lead partner(s) are identified in bold (e.g. CGRC) and the assisting partners are also identified.

An estimate of the resources required to implement each action has been identified to assist the Cootamundra-Gundagai Regional Council with its budgeting processes. These are broad indicative estimates and should be reviewed prior to implementation. There has been no financial commitment from the Cootamundra-Gundagai Regional Council to implement the actions identified and relevant actions will be considered as part of normal annual business planning/budgeting and long-term financial planning processes. The Action Plan provides the following indicative resource requirements:

- | | |
|--------------|-----------------------|
| • Low (L) | \$0 – \$100,000 |
| • Medium (M) | \$100,000 – \$500,000 |
| • High (H) | \$500,000+ |

Funding for the projects can be sourced through various funding programs as outlined in the section *Potential Funding Opportunities*

Strategy and Actions - Facilities

Overall Objective: Support the development of sustainable and fit-for-purpose facilities that optimise participation and meet the needs of the community.

1. Strategy: Strategic Precinct Development

Strategically plan for the development and enhancement of key precincts.

Rationale: Due to a number of reasons including ageing infrastructure, changing community preferences and demographics, the emergence of some sports and recreational activities, and the need to provide functional, efficient and fit-for-purpose facilities, the Cootamundra-Gundagai Regional Council will need to continue to plan for the development and enhancement of key sport and recreation precincts.

It is proposed that resources primarily be directed towards future investment in facilities at these locations, with a focus on projects that have multiple uses, address ageing infrastructure, demonstrate need/demand and are well located/accessible. This does not prohibit investment in other facilities outside these hubs where there is a clear and demonstrable benefit to the community such as within the villages (this is further addressed in Strategy 2) where it is considered to be of strategic importance to the critical delivery of sport and recreation activities for the Village and the wider region.

Actions	Timeframe	Partners	Resources
<p>Cootamundra Sporting Precinct: Undertake a Master Plan for the Precinct that includes Fisher Park, the indoor Sports Centre and Nicholson Park consider:</p> <ul style="list-style-type: none"> • Consolidation and refurbishment of the existing Sports Centre, changerooms, Frank Smith Grandstand and associated amenities into a multi-purpose community sporting hub facility. • Rationalisation of other aging built facilities • Future level of outdoor court provision specifically netball/basketball courts • Playing surfaces • Resurfacing of the velodrome • Traffic movement and parking • Future sports lighting requirements • Increased recreational use of the site • Connection with CBD, aquatic centre and Clarke Oval • Safety and security 	Medium	<ul style="list-style-type: none"> • CGRC • Community organisations/ User groups (<i>existing and potential users</i>) • Local Schools • Peak bodies • NSW Sport • Broader community 	H

1. Strategy: Strategic Precinct Development Strategically plan for the development and enhancement of key precincts.			
1.1. Cootamundra Pool Precinct: Undertake a Master Plan for the precinct of the Cootamundra Pool, Clarke Oval and Gordon Vesperman Park considering: <ul style="list-style-type: none"> Swimming pool upgrades to ensure compliance with NSW Public Health Act and Regulations and Royal Lifesaving Guidelines for Safe Pool Operations including separate plant for each pool and meeting required turnover times. Provision of disability access and wet deck edges Replacing toddlers pool with splashpad Future need and function of old grandstand Linkage to beach volleyball courts Further integration of the swimming pool site with adjoining recreation facilities at Gordon Vesperman Park Provide support infrastructure for Clarke Oval multipurpose-hall facility such as parking, drainage and access road. Traffic and pedestrian movement at Clarke Oval Improved spectator seating at Clarke Oval Future sports lighting requirements at Clarke Oval Public toilet provision at Clarke Oval Connection and linkages with Fisher Park, Nicholson Park and Sports Centre. Extension of existing walking path to create a fitness loop trail around the precinct. Safety and security 	Short	<ul style="list-style-type: none"> CGRC Community organisations/ User groups (<i>existing and potential users</i>) Local Schools Peak bodies Royal Lifesaving NSW Sport Broader community 	H
1.2. Cootamundra Showgrounds: Undertake a Master Plan for the showgrounds precinct that considers: <ul style="list-style-type: none"> Upgrade of harness racing track Further activation of the site Signage and wayfinding Traffic management, pedestrian movement and parking Consolidation of ageing-built facilities Delineation of spaces (i.e. trotting track, caravan/camping, arena) Amenities 	Short	<ul style="list-style-type: none"> Cootamundra Showground Users Committee CGRC Community organisations/ User groups (<i>existing and potential users</i>) Peak bodies NSW Sport Broader community 	M

1. Strategy: Strategic Precinct Development			
Strategically plan for the development and enhancement of key precincts.			
<p>1.3. The Arts Centre Cootamundra: Undertake a Master Plan for the Arts Centre Precinct to enhance and develop The Arts Centre as a regionally significant cultural facility considering:</p> <ul style="list-style-type: none"> • Business development opportunities and value adding • Asset management including maintenance • Further promotion and marketing • Traffic management and parking around and on the site • Attracting additional events and activities to the Centre 	Ongoing	<ul style="list-style-type: none"> • Creative Arts Inc • CGRC • Community organisations/ User groups (<i>existing and potential users</i>) • Adjoining businesses • Broader community 	M
<p>1.4. Gundagai Sporting Precinct: Undertake a Master Plan for the precinct that includes Anzac Park, Owen Vincent Oval and Stan Crowe Oval considering:</p> <ul style="list-style-type: none"> • Better integration of new clubrooms with surrounding playing fields • Relocation of cricket nets • Consolidation of aging built facilities at Anzac Park into a multi-purpose facility • Traffic movement and parking • Wayfinding and pedestrian access across the site • Future sports lighting requirements • Exercise equipment • Connection with town centre, Yarr Park & Heydon Park • Safety and security 	Medium	<ul style="list-style-type: none"> • CGRC • Community organisations/ User groups (<i>existing and potential users</i>) • Peak bodies • NSW Sport • Broader community 	H

1. Strategy: Strategic Precinct Development			
Strategically plan for the development and enhancement of key precincts.			
<p>1.5. Gundagai Showgrounds and Racecourse: Progressive upgrades of the precinct including:</p> <ul style="list-style-type: none"> • General building upgrades in line with recently complete audit • Refurbish main pavilion and stage area to cater for functions and events (i.e. weddings) • Upgrade Rodeo Arena to include LED lighting • Improved pedestrian access and wayfinding • Improved fencing • Amenities block upgrade in accordance with current plans • Delineation of event spaces (i.e. horses/cattle, dogs/sheep) • Events space for marquees and tents • Upgrade of poultry pavilion • Mains power for campsites • Trail linkage showcasing Australia's longest and State Heritage Listed timber viaduct 	Ongoing	<ul style="list-style-type: none"> • Gundagai Showgrounds & Racecourse Trust • CGRC • Community organisations/ User groups (<i>existing and potential users</i>) • Peak bodies • NSW Sport • Broader community 	M

1. Strategy: Strategic Precinct Development			
Strategically plan for the development and enhancement of key precincts.			
<p>1.6. Gundagai Town Centre Sporting Precinct: Undertake a Master Plan for the precinct of the Olympic Pool, GYC (netball) and District Services Club (lawn bowls, golf, tennis, squash) considering:</p> <ul style="list-style-type: none"> Swimming pool upgrades to ensure compliance with NSW Public Health Act and Regulations and Royal Lifesaving Guidelines for Safe Pool Operations including separate plant for each pool and meeting required turnover times. Also consider the following at the swimming pool <ul style="list-style-type: none"> Disability access, re-tiling and wet deck edges Replacing toddlers pool with splashpad Refurbish entry, changerooms, kiosk and clubrooms to improve functionality, meet Australian Building Code and universal accessibility standards Increased shade Diving board depth requirements and starting block replacements A streetscape plan focusing on Sheridan Lane to improve pedestrian crossing points/movement, traffic management and parking. Covering existing netball court(s) Integrating new netball clubrooms (GYC) in refurbished swimming pool facilities Encourage multiuse of all outdoor courts (e.g. multi-line marking, emerging sports such as Pickle Ball) Investigating the cause of subsidence issues at the rear of Services Club tennis courts and rectify accordingly 	Immediate	<ul style="list-style-type: none"> CGRC District Services Club Gundagai Netball Club Community organisations/ User groups (<i>existing and potential users</i>) Peak bodies Royal Lifesaving NSW Sport Broader community 	H

1. Strategy: Strategic Precinct Development			
Strategically plan for the development and enhancement of key precincts.			
<p>1.7. Plan for and develop a tourism and recreation trail network that links existing trails, key attractions within Gundagai and surrounds including:</p> <ul style="list-style-type: none"> • The Dog on the Tuckerbox Trail linking through to the old railway corridor at Ann Street • Development of the Gundagai Rail Trail (Section 1: Ann St to Sheridan St) in line with the Gundagai Town Cycleway plan and Gundagai Rail Trail Feasibility Study. • Gundagai Heritage Trail linkages through the town along Sheridan Street • Sheridan St turning South onto Otway St, cross the Morley's Creek, follow east to Middleton Dr onto the Ol Bell Drive through to the Show Grounds & Racecourse Precinct. • Future connections could include Rotary Look Out (scenic views), Tumut Reserve (kayaking and canoeing), Mount Kimo (bushwalking, mountain biking), Mudjarn Nature Reserve (birdwatching), The Jackalass alluvial field at South Gundagai (heritage) and Gocup Road in the South (future rail trail). <p>This will require determining</p> <ul style="list-style-type: none"> • Most appropriate alignments for the trail sections • Signage and wayfinding strategy • Trail facilities (e.g. amenities, parking) • End of trip facilities • Identifying points of interest (i.e. lookouts, heritage sites, cafes, pubs) • Integration with existing and/or future trail networks • Mapping and marketing plan 	Short	<ul style="list-style-type: none"> • CGRC • NSW Parks and Wildlife Service • Gundagai Showgrounds & Racecourse Trust • Eastern Riverina Rail Trail Alliance • Destination NSW • Peak bodies • Local businesses • Broader community 	H

1. Strategy: Strategic Precinct Development			
Strategically plan for the development and enhancement of key precincts.			
<p>1.8. Plan for and develop a tourism and recreation trail network that links existing trails, key attractions within Cootamundra and surrounds including, but not limited to:</p> <ul style="list-style-type: none"> • Captains Walk • Bird Walk • The Arts Centre • Heritage Centre • Mountain Bike Track • Pioneer Park • Migurra Reserve • WWII Fuel Depot Site (no.3 IAFD) • Wattle Arboretum <p>This will require determining</p> <ul style="list-style-type: none"> • Most appropriate alignments for the trail sections • Signage and wayfinding strategy • Trail facilities (e.g. amenities, parking) • End of trip facilities • Points of interest (i.e. heritage/cultural sites, cafes, pubs, restaurants) • Integration with existing and/or future trail networks • Mapping and marketing plan 	Medium	<ul style="list-style-type: none"> • CGRC • NSW Parks and Wildlife Service • Destination NSW • Peak bodies • Muttama Creek Regeneration Group • Dudauman Frampton Group Landcare Group • Cootamundra Cycling Club • Creative Arts Inc. • Local businesses • Broader community 	M

2. Strategy: Existing sport and recreation facilities.			
Review, enhance and repurpose existing facilities to meet community recreation and sporting needs.			
Rationale: There are many existing recreation facilities within the Cootamundra-Gundagai Regional Council region. Some are nearing the end of their useful life and will require upgrading, consolidation or redevelopment to ensure they are safe, fit-for-purpose and sustainable and meet the future recreation needs of the community.			
Actions	Timeframe	Partners	Resources
2.1. Coolac: Recreation Ground - – Undertake progressive refurbishment including: <ul style="list-style-type: none"> • Providing access to a water supply (e.g. town water, bore, rainwater). • Definition of site areas such as oval/access/movement • Installation of a playground • Upgrading courts to a multipurpose court • Installation of a BBQ • Decommissioning tennis clubrooms, tennis court lighting, old playground equipment, cricket portable backstop • Providing safety lighting • Installation of goals for recreation use (e.g. AFL/NRL) • Fitness stations • Camping/RV designated area • Cricket net landscape works • Upgrading park signage in-line with corporate style 	Ongoing	<ul style="list-style-type: none"> • Coolac Hall Management Committee • CGRC • Coolac Cricket Club • Community organisations/ User groups (existing and potential users) • Peak bodies • NSW Office for Sport • Broader community 	M
2.2. Coolac: Upgrade the Memorial Hall including: <ul style="list-style-type: none"> • Upgrade of kitchen and storeroom • Installation of solar power and insulation 	Short	<ul style="list-style-type: none"> • Coolac Hall Management Committee • CGRC • Broader community • Community organisations/ User groups (existing and potential users) 	L

2. Strategy: Existing sport and recreation facilities. Review, enhance and repurpose existing facilities to meet community recreation and sporting needs.				
2.3. Coolac: Investigate the feasibility of creating a link/loop trail that showcases the local heritage and culture. This will require: <ul style="list-style-type: none"> Determining the most appropriate alignments for the trail sections Signage and wayfinding strategy Trail facilities (e.g. amenities, parking, end of trip) Points of interest (i.e. heritage/cultural sites, pub) Integration with future trail networks (e.g. proposed rail trail) Mapping and marketing 	Longer	<ul style="list-style-type: none"> CGRC Broader community Local businesses 	L	
2.4. Adjungbilly: Support ongoing maintenance and enhancement of the Adjungbilly tennis courts and Hall. This may include: <ul style="list-style-type: none"> Installation of a cricket net (near the tennis court) Installation of a large screen & projector in the hall 	Ongoing	<ul style="list-style-type: none"> Bongongo Public School Local Community Management Committee. CGRC 	L	
2.5. Muttama: Recreation Ground - Undertake progressive refurbishment to create a passive recreation ground that caters for residents and visitors including: <ul style="list-style-type: none"> Improving the tennis courts (1-2 courts) to a suitable playing standard. Potentially developing a multi-use court on one of the remaining unused courts to cater to sports such as netball, basketball or children's games such as foursquare to complement playground. Installing safety lighting Decommissioning existing playground equipment as it is not compliant with Australian Standards. Installation of new playground equipment Installation of water tank to provide water to clubroom for community events. Future development of the club rooms and toilets to potentially cater for campers. 	Ongoing	<ul style="list-style-type: none"> Local Community CGRC 	M	
2.6. Muttama: Memorial Hall - Upgrade the Memorial Hall in line with heritage advice and building audit including: <ul style="list-style-type: none"> Staged program of repairs (e.g. re-stumping) Re-establishing the war memorabilia display 	Immediate	<ul style="list-style-type: none"> Local Community CGRC 	M	

2. Strategy: Existing sport and recreation facilities. Review, enhance and repurpose existing facilities to meet community recreation and sporting needs.				
<p>2.7. Wallendbeen: Recreation Ground - Undertake progressive refurbishment to create a passive recreation ground that caters for residents and visitors including:</p> <ul style="list-style-type: none"> • Developing a safe pedestrian connection from the cricket oval to the Wallendbeen town centre, including potentially a foot bridge over the creek. • Decommissioning existing playground equipment as is not compliant with Australian Standards • Installation of new playground equipment to compliment exercise equipment and cater for travelers stopping off at the oval for a rest. • Installation of shade sail over the exercise equipment to protect from weather • Improved lighting at kiosk • Improved seating around the oval. 	Ongoing	<ul style="list-style-type: none"> • Wallendbeen Hall Management Committee • CGRC • Broader community • Local businesses 	M	
<p>2.8. Wallendbeen: Tennis Club – Upgrade tennis club and surrounds including:</p> <ul style="list-style-type: none"> • Enhancing access/egress from carpark to the tennis courts • Improving the access/egress from the club rooms to the tennis courts by providing disability ramp • Conducting a building audit to determine whether to upgrade or demolish the clubrooms and reinstate, including the toilets to the rear • Decommission swing 	Immediate	<ul style="list-style-type: none"> • Wallendbeen Tennis Club • CGRC • Tennis NSW • NSW Office for Sport • Broader community 	M	
<p>2.9. Wallendbeen: Trail - Investigate the feasibility of creating a heritage trail that showcases the silos, pubs, King Street, oval and cemetery aligned with the King Street Revitalisation Report. This will require determining:</p> <ul style="list-style-type: none"> • Most appropriate alignments for the trail sections • Signage and wayfinding strategy • Trail facilities (e.g. amenities, parking, end of trip) • Points of interest (i.e. heritage/cultural sites, pub, silo) • Integration with future trail networks (e.g. proposed rail trail) • Mapping and marketing 	Longer	<ul style="list-style-type: none"> • CGRC • Broader community • Local businesses 	L	

2. Strategy: Existing sport and recreation facilities. Review, enhance and repurpose existing facilities to meet community recreation and sporting needs.				
2.10. Stockinbingal: Recreation Ground – Undertake a Master Plan for the precinct considering: <ul style="list-style-type: none"> • Future clubroom and storage buildings including additional toilets to cater for recreation ground users, Village Fair and other community events (e.g. birthdays). • Develop a shared use pathway and connection around the oval to connect newly installed pump track to road and other amenities. • Delineate areas within the facility, including recreation oval, pump track, camping area, parking areas and vehicle access roads. • Installation of a playspace and shelter to complement the pump track • Solar lighting (safety) • Signage provision including safety and directional • Decommission stock loading ramp 	Medium	<ul style="list-style-type: none"> • CGRC • Broader community 	M	
2.11. Stockinbingal: King George Park - Maintain new tennis courts, refurbish clubrooms, improve toilet facilities and extend shade sail over new playground equipment.	Longer	<ul style="list-style-type: none"> • Stockinbingal Tennis Club • CGRC • Tennis NSW • NSW Office for Sport • Broader community 	M	
2.12. Stockinbingal: Ellwood's Hall - Undertake redevelopment of Hall in line with design plans	Immediate	<ul style="list-style-type: none"> • Stockinbingal Hall Management Committee • CGRC • Broader community • Local businesses 	M	
2.13. Stockinbingal: HeritageTrail – Refresh heritage walk signage and promotional material and investigate the inclusion of a cemetery trail.	Longer	<ul style="list-style-type: none"> • CGRC • Broader community • Local businesses 	L	

2. Strategy: Existing sport and recreation facilities. Review, enhance and repurpose existing facilities to meet community recreation and sporting needs.				
2.14. Stockinbingal: Bowls Club – Continue to enhance and maintain the bowling clubrooms, support facilities and green.	Ongoing	<ul style="list-style-type: none"> • Stockinbingal Bowls Club • CGRC • Bowls NSW • NSW Sport • Broader community 	L	
2.15. Nangus: Recreation Ground – Undertake a Master Plan for the precinct considering: <ul style="list-style-type: none"> • Developing a visible connection to the recreation ground (playground, courts) from Nangus Rd. • Delineate areas within the facility, including parking areas and access points • Establish free camping sites area within the oval surrounds • Consider the feasibility of providing a bike skills area or dirt mounds for children • Lighting assessment (consider lighting only one tennis court) • Improvements to shelter adjoining tennis courts • Shade over the existing playground equipment • Signage and wayfinding • Replacement of gas BBQ with electric BBQ • Installation of picnic table and chairs • Public access to existing hall toilets or provision of standalone toilet facilities. 	Short	<ul style="list-style-type: none"> • Nangus Hall Committee • CGRC • Broader community 	L	
2.16. Nangus: Public Hall – Refurbish the Public Hall to meet contemporary standards.	Ongoing	<ul style="list-style-type: none"> • Nangus Hall Committee • CGRC • Broader community 	L	

2. Strategy: Existing sport and recreation facilities. Review, enhance and repurpose existing facilities to meet community recreation and sporting needs.				
2.17. Tumblong: War Memorial and Citizens Hall Precinct – Progressively upgrade the Precinct including: <ul style="list-style-type: none"> • Refurbishing the Hall to meet contemporary standards • Providing a universally accessible access path from parking area. • Supporting the acquisition of land to provide additional land for the precinct to enable a nature playspace to be developed, with associated picnic tables, shade and BBQ. • Redeveloping existing courts into one tennis court and one multi-use court. • Formalising parking 	Immediate	<ul style="list-style-type: none"> • Tumblong Hall Committee • CGRC • Broader community 	L	
2.18. Tumblong: Trail - Investigate the feasibility of creating a heritage trail that showcases the Church, hall, pub, cemetery, creek and Hannah Jane mystery. This will require determining: <ul style="list-style-type: none"> • Most appropriate alignments for the trail sections • Signage and wayfinding strategy • Trail facilities (e.g. amenities, parking, end of trip) • Points of interest (i.e. heritage/cultural sites, pub, church) • Integration with future trail networks (e.g. proposed rail trail) • Mapping and marketing 	Longer	<ul style="list-style-type: none"> • CGRC • Broader community 	L	
2.19. Gundagai: Yarri Park – Establish park as a youth precinct including a new basketball court, improved landscaping around the skatepark and improve connections with surrounding recreation grounds.	Immediate	<ul style="list-style-type: none"> • CGRC • Broader community • Young people 	M	
2.20. Gundagai: Heydon Park – Determine a suitable future use for the previous hockey pitch which could include an event space or an overflow for sports such as soccer and rugby league.	Longer	<ul style="list-style-type: none"> • CGRC • Community organisations/ User groups (existing and potential users) 	L	
2.21. Gundagai: Craft Workshop – Continue to maintain and enhance facility to cater for craft and men's shed activities.	Ongoing	<ul style="list-style-type: none"> • Lions Club • CGRC 	L	

2. Strategy: Existing sport and recreation facilities. Review, enhance and repurpose existing facilities to meet community recreation and sporting needs.				
2.22. Gundagai: Tumut Reserve – Enhance reserve to cater for water sports (e.g. canoeing, kayaking, stand up paddle boarding, fishing and nature-based activities) including formalising access, shade & picnic facilities.	Short	<ul style="list-style-type: none"> • CGRC • NSW Department Planning, Industry and Environment • Destination NSW • Broader community • Local businesses 	M	
2.23. Gundagai: Gundagai Scout Group – Upgrade current facility to include new toilets, heating, insulation and solar panels.	Short	<ul style="list-style-type: none"> • CGRC • Gundagai Scout Group • Scouts NSW 	L	
2.24. Gundagai: Lindley Park - Upgrade park in line with Lindley Park Concept Plan including: <ul style="list-style-type: none"> • Removal of the existing cottage • Installation of the car park area, concrete path, toilet, BBQ area, park furniture, trampoline, shade sail, water fountain and rubber softfall elements etc 	Immediate / Short	<ul style="list-style-type: none"> • CGRC • Broader community 	M	
2.25. Gundagai: Friendship Park – Upgrade park in line with Friendship Park Concept Plan and formalise the off-leash dog area including: <ul style="list-style-type: none"> • Installation of toilets, BBQ area, water fountain, additional seating and rubber softfall elements. • Installation of fencing and associated dog park features so dogs can exercise without a leash, thereby improving the health and fitness of both dog and owner and ensuring the protection of children & families at the park. 	Immediate / Short	<ul style="list-style-type: none"> • CGRC • Broader community 	L	
2.26. Gundagai: Palmer Park - Improve and maintain park infrastructure to support increased activation through: <ul style="list-style-type: none"> • Installation of seating, water fountain and shade sail • Upgrade rubber softfall and ensure it remains at an adequate standard. 	Short	<ul style="list-style-type: none"> • CGRC • Broader community 	L	

2. Strategy: Existing sport and recreation facilities. Review, enhance and repurpose existing facilities to meet community recreation and sporting needs.				
2.27. Gundagai: Carberry Park – Upgrade park in line with Carberry Park Development Concept Plan including: <ul style="list-style-type: none"> • Installation of an adventure playground with sand & water play, cableway, toddler, junior, & senior zones, swing & spin, picnic zone • Upgrade of open space for gatherings/events/amphitheatre, passive recreation and fitness zone. 	Short	<ul style="list-style-type: none"> • CGRC • Broader community 	M	
2.28. Cootamundra: Albert Park – Enhance park as the premier cricket facility in Cootamundra and develop new cricket practice facilities, repair scoreboard, improve access to the oval and install seating on the western side.	Short	<ul style="list-style-type: none"> • CGRC • Cootamundra District Cricket Association • Cootamundra District Junior Cricket Association • Cootamundra RSL • Cricket NSW • NSW Office for Sport • Broader community 	L	
2.29. Cootamundra: Bradman Oval – Enhance oval as a local cricket facility including upgrading cricket nets, amenities and general surrounds to capitalise on visitor interest in the cricket heritage of the site.	Medium	<ul style="list-style-type: none"> • CGRC • Cootamundra District Cricket Association • Cootamundra District Junior Cricket Association • Cricket NSW • NSW Office for Sport • Broader community 	L	

2. Strategy: Existing sport and recreation facilities. Review, enhance and repurpose existing facilities to meet community recreation and sporting needs.			
2.30. Cootamundra: Country Club Oval – Continue to enhance precinct as the premier rugby union facility in the region by installing a new scoreboard, upgraded lighting and parking.	Short	<ul style="list-style-type: none"> • CGRC • Cootamundra Country Club • Cootamundra Rugby Club • NSW Rugby Union • NSW Office for Sport • Broader community 	L
2.31. Cootamundra: County Club – Continue to enhance the Cootamundra Country Club as the key precinct for golf, bowls and croquet.	Ongoing	<ul style="list-style-type: none"> • Cootamundra Country Club • CGRC • Community organisations/ User groups (<i>existing and potential users</i>) • Peak bodies • NSW Office for Sport • Broader community 	L
2.32. Cootamundra: Ex-Services Club – Continue to enhance the facility as a key bowling club.	Ongoing	<ul style="list-style-type: none"> • Cootamundra Ex-Services Club • CGRC • Community organisations/ User groups (<i>existing and potential users</i>) • Peak bodies • NSW Office for Sport • Broader community 	L

2. Strategy: Existing sport and recreation facilities.				
Review, enhance and repurpose existing facilities to meet community recreation and sporting needs.				
2.33. Cootamundra: Jubilee Botanical Park – Continue to enhance the park as a key open space for passive recreation within Cootamundra, including ongoing expansion of The Captain's Walk.	Ongoing	<ul style="list-style-type: none"> • CGRC • Bradman Museum of Cricket • Broader community 	L	
2.34. Cootamundra: Mountain Bike Track – Continue to upgrade the trail network including improved signage (i.e. directional, classification), parking and tread.	Ongoing	<ul style="list-style-type: none"> • CGRC • Cootamundra Cycle Club • Broader community 	L	
2.35. Cootamundra: Pioneer Park – Undertake a trail audit and assessment of the trail surface, signage, alignment, classification and support facilities to determine required upgrades and maintenance requirements to create an attractive trail hub.	Short	<ul style="list-style-type: none"> • CGRC • Broader community 	L	
2.36. Cootamundra: Firearms Range – Continue to enhance as the premier shooting range in the region including consolidating underutilised buildings and ensure compliance with NSW Police Force firearm ranges regulations.	Medium	<ul style="list-style-type: none"> • Cootamundra Rifle Club • CGRC • NSW Police Force 	M	
2.37. Cootamundra: O'Connor Park – Continue to enhance as the premier senior soccer facility in Cootamundra through new sports lighting and improvement of the entrance and carparking.	Immediate	<ul style="list-style-type: none"> • CGRC • Cootamundra Soccer Club • Cootamundra Strikers Soccer Club • Football NSW • NSW Office for Sport • Broader community 	M	
2.38. Cootamundra: Mitchell Park – Continue to enhance as the junior soccer facility in Cootamundra through improved sports lighting, fencing, spectator seating and changerooms (unisex). Retain also as a cricket oval to support Albert Park, Clarke Oval and Bradman Oval.	Medium	<ul style="list-style-type: none"> • CGRC • Cootamundra Junior Soccer • Football NSW • NSW Office for Sport • Broader community 	M	

2. Strategy: Existing sport and recreation facilities.				
Review, enhance and repurpose existing facilities to meet community recreation and sporting needs.				
2.39. Cootamundra: State Model Flying Field – Continue to enhance as the State facility for model flying in NSW.	Ongoing	<ul style="list-style-type: none"> • Minature Aero Sports NSW Inc • CGRC 	L	
2.40. Cootamundra: Squash Centre – Continue to enhance as the key squash facility in Cootamundra through court renovation and ongoing maintenance.	Immediate	<ul style="list-style-type: none"> • Cootamundra Squash Association • CGRC • Squash NSW • NSW Office for Sport 	L	
2.41. Cootamundra: Scouts Hall – Continue to enhance as the key Scout facility in Cootamundra through ongoing refurbishment and maintenance.	Ongoing	<ul style="list-style-type: none"> • Cootamundra Scout Group • CGRC 	M	
2.42. Cootamundra: Gyms – Support private providers of fitness and recreation activities to meet the needs of the region.	Ongoing	<ul style="list-style-type: none"> • Private Providers 	L	
2.43. Cootamundra: Men's Shed – Support the relocation of the Cootamundra Men's Shed to relocate to Depot 2 on Hovell Street and construct a new facility.	Immediate	<ul style="list-style-type: none"> • Cootamundra Men's Shed • CGRC 	M	
2.44. Cootamundra: Drag Strip – Support the development of the starting pad (i.e. drag racing) at the Cootamundra Airport.	Immediate	<ul style="list-style-type: none"> • CGRC • Cootamundra Airport • Community organisations/ User groups (existing and potential users) 	L	
2.45. Cootamundra: The Off-Leash Dog Park (Apex Park) – Continue to enhance as the central off-leash dog park in Cootamundra so dogs can exercise without a leash, thereby improving the health and fitness of both dog and owner and increasing opportunities for dog socialisation.	Ongoing	<ul style="list-style-type: none"> • CGRC • All Breeds Kennel Club Inc 	L	
2.46. Cootamundra: Cameron Square – Improve and maintain park infrastructure to support increased activation through enhancing existing playground & picnic facilities. Remove aged cricket nets from the square.	Medium	<ul style="list-style-type: none"> • CGRC • Broader community 	L	

2. Strategy: Existing sport and recreation facilities. Review, enhance and repurpose existing facilities to meet community recreation and sporting needs.				
2.47. Cootamundra: Harolds Conkey Park – Continue to maintain at current levels to support active recreation (i.e. Harold Conkey Ave to Pinkstone Ave path).	Ongoing	<ul style="list-style-type: none"> • CGRC • Broader community 	L	
2.48. Cootamundra: Kingston Park – Continue to improve park to provide a stop for visitors/tourists and upgrade existing facilities to maximise usage by members of the local community.	Ongoing	<ul style="list-style-type: none"> • CGRC • Broader community 	L	
2.49. Apply for external funding and grants in order to provide new, upgraded or redeveloped recreation facilities identified in this study.	Ongoing	<ul style="list-style-type: none"> • CGRC • Community organisations/ User groups • Peak bodies • State Government • Federal Government 	L, M, H	

3. Strategy: Optimal usage			
Optimise usage of recreation facilities and open spaces:			
Rationale: The Cootamundra Gundagai Regional Council is the owner and/or manager of a diverse and significant number of recreation facilities. These facilities need to be enhanced over time to ensure they are being used at their optimum levels. Initiatives such as the introduction of efficient lighting technologies and innovative storage solutions need to be further explored and implemented over time.			
Actions	Timeframe	Partners	Resources
3.1. Continue to review and upgrade sportsground lighting including the usage of LED lighting systems in-line with the actions relating to sports lighting identified in Strategy 2.	Ongoing	<ul style="list-style-type: none"> CGRC Peak bodies Community organisations/ User groups 	M
3.2. Carefully plan and integrate existing and proposed storage facilities into existing, redeveloped or new facilities.	Ongoing	<ul style="list-style-type: none"> CGRC Community organisations/ User groups 	M
3.3. Consider co-location of compatible recreation organisations for mutual benefit (i.e. recreation, community, tourism, economic) and promote shared use of facilities wherever feasible and appropriate to do so.	Ongoing	<ul style="list-style-type: none"> Community organisations/ User groups CGRC Peak bodies Community services Broader community 	L
3.4. Promote the use of underutilised recreation facilities for alternative uses (e.g. community halls that can also be used for yoga, pilates, dance, meetings, private functions etc.).	Ongoing	<ul style="list-style-type: none"> CGRC Community organisations/ User groups 	L
3.5. Implement contemporary facility booking systems such as Tennis Australia's Book a Court online court booking and payment platform.	Ongoing	<ul style="list-style-type: none"> Community organisations/ User groups CGRC Peak bodies 	

4. Strategy: Facility Management			
Develop and adopt an equitable and sustainable approach to facility management and maintenance.			
<p>Rationale: Given the large suite of recreation facilities, open spaces and assets under the Cootamundra Gundagai Regional Council's ownership and control there is a need to ensure that sustainable facility management and maintenance processes and systems are in place. There is also the added complexity of many facilities being leased/licensed to external parties, primarily sporting and recreation clubs and associations operated by volunteers and with limited resources that can be committed to asset management. Many of the recreation grounds and facilities located in the Villages and to a lesser degree Cootamundra and Gundagai are located on Crown Reserves and there have been recent changes in legislation as to how this land and associated facilities will be managed going forward. Ensuring compliance with relevant legislative requirements and standards is critical along with improving tenure agreements to clearly identify responsibilities of the various parties. There is a need to review the fees and charges levied on facility users. There is also a need for facility managers including clubs and associations to continually develop and plan for the future including facility management practices and developments including ensuring compliance with the recent changes to the Crown Land legislation.</p>			
Actions	Timeframe	Partners	Resources
4.1. Regularly audit facilities for compliance with relevant legislation, policies and standards (e.g. risk management, Building Code of Australia, Australian Standards) in line with Asset Management Plans.	Ongoing	<ul style="list-style-type: none"> • CGRC • Community organisations/ User groups 	M
4.2. Undertake an audit of all facilities to develop a program of works to ensure that all facilities are compliant with the Disability Discrimination Act (DDA)	Short	<ul style="list-style-type: none"> • CGRC • Community organisations/ User groups 	
4.3. Investigate new technologies for 'smart' management and maintenance particularly in the areas of access (e.g. card access), lighting (e.g. LED, automation/smart controllers etc.) and irrigation (central control, moisture sensors, etc.)	Ongoing	<ul style="list-style-type: none"> • CGRC • Community organisations/ User groups • Peak bodies 	L
4.4. Ensure lease and licence arrangements clearly define responsibilities for management and maintenance of facilities.	Ongoing	<ul style="list-style-type: none"> • CGRC • Community organisations/ User groups 	L
4.5. Determine the appropriate means to equitably maintain recreation grounds and facilities within the Villages.	Short	<ul style="list-style-type: none"> • CGRC • Community organisations/User groups • Broader community 	L

4. Strategy: Facility Management Develop and adopt an equitable and sustainable approach to facility management and maintenance.			
4.6. Review and amend Council policies relating to fee and charges for use of Council owned/managed facilities to ensure equitable fees and charges across the Council area.	Short	<ul style="list-style-type: none"> • CGRC • Community organisations/ User groups • Peak bodies 	L
4.7. Incorporate recreation planning initiatives into broader community planning, such as local and regional plans (e.g. strategic plans, development plans, land use planning & initiatives of other relevant organisations)	Short	<ul style="list-style-type: none"> • CGRC • Community organisations/User groups 	L
4.8. Review the maintenance costs associated with Cootamundra Gundagai Regional Council's provision of ovals and facilities to identify areas where resources can be saved, while continuing to support clubs and user groups.	Medium	<ul style="list-style-type: none"> • CGRC • Community organisations/ User groups • Peak bodies 	L
4.9. Encourage the preparation of club/association strategic plans to articulate their goals, objectives and future directions. This document can help to inform and guide future planning for recreation, improve sustainability of clubs and associations and facilitate increased participation in recreation activities.	Ongoing	<ul style="list-style-type: none"> • Community organisations/ User groups • Peak bodies • CGRC 	L
4.10. In accordance with the new Crown Lands legislation and the Local Government Act prepare new plans of management for Crown Land now the responsibility of Council to manage. This needs to occur by 30 June 2021	Short	<ul style="list-style-type: none"> • CGRC • Existing Crown Land Managers • NSW Department of Planning, Industry and Environment 	L

Strategy and Actions - Clubs/User Groups

Overall objective: Facilitate a strong and sustainable network of recreation clubs, associations and user groups which encourages increased participation across the community.

5. Strategy: Accessibility			
Improve the accessibility of recreation opportunities for all members of the community.			
Rationale: Providing good levels of access to recreation facilities and services including competitions, training, casual activities and social events is important in ensuring sustainable and vibrant clubs and associations and community benefit. Physical and intangible initiatives to improve accessibility can be delivered to ensure all members of the community can readily access recreation opportunities.			
Actions	Timeframe	Partners	Resources
5.1. Provide improved footpath and bikeway linkages between residential areas and sport and recreation providers/clubs to ensure that involvement in sport and recreation activities is safely accessible for all.	Ongoing	<ul style="list-style-type: none"> CGRC Community organisations/ User groups Broader community 	H
5.2. Ensure that all recreation facility upgrades, and new developments are compliant with the <i>Disability Discrimination Act</i> (DDA) and facilitate an inclusive culture across recreation providers.	Ongoing	<ul style="list-style-type: none"> CGRC Community organisations/ User groups Peak bodies State Government 	M
5.3. Promote active and healthy lifestyle choices across all recreation providers (i.e. responsible alcohol consumption, healthy eating) to encourage community involvement and facilitate a healthy, inclusive culture.	Ongoing	<ul style="list-style-type: none"> Community organisations/ User groups Peak bodies CGRC Broader community 	L

6. Strategy: Volunteering			
Assist clubs and associations in developing their volunteer bases			
Rationale: Volunteers are the backbone of all community-based clubs and associations. Without volunteers community level recreation would not function effectively. Sporting volunteers are the largest section of the volunteer market and there is a need to recognise this major contribution to the community through positive social, health and economic impacts.			
Actions	Timeframe	Partners	Resources
6.1. Establish an annual volunteer recognition event for recreation volunteers (e.g. administrators, coaches and officials).	Short	<ul style="list-style-type: none"> • CGRC • Community organisations/ User groups • NSW Volunteering • Peak bodies • Broader community 	L
6.2. Establish a <i>Volunteers</i> Web and Facebook page, as a means for volunteers across the region to connect and share ideas and information. Utilise this online communication tool to form a volunteer pool, where existing residents or people new to the region can suggest the areas in which they would be willing to assist.	Short	<ul style="list-style-type: none"> • CGRC • Community organisations/ User groups • NSW Volunteering • Broader community 	L
6.3. Facilitate club and association training courses (e.g. recruitment, retention and management of volunteers, event planning, financial management, risk management and governance).	Medium	<ul style="list-style-type: none"> • Peak bodies • Sport NSW • NSW Office for Sport • Community organisations/ User groups • CGRC 	L

7. Strategy: Partnerships			
Work collaboratively with clubs, associations, schools, state and federal governments to develop and provide recreation opportunities in the region.			
Rationale: The delivery of recreation across the Cootamundra Gundagai Region is achieved through partnerships between all three levels of government (local, state and national), schools, peak bodies, associations, clubs and the private sector. Without these collaborative arrangements to plan and provide facilities, services and resourcing, sport and recreation activities would not exist in the format they do today. These partnership arrangements need to be preserved and strengthened to ensure the ongoing development of sport and recreation in the region. Regional planning and collaboration with relevant agencies should continue to be pursued along with specific initiatives to strengthen and support vulnerable clubs and associations.			
Actions	Timeframe	Partners	Resources
7.1. Facilitate partnerships with national and state peak bodies, private industry, government, non-government organisations and education bodies to enhance club development and participation.	Ongoing	<ul style="list-style-type: none"> • CGRC • Community organisations/ User groups • Education providers • Peak bodies • Private businesses • State Government • Federal Government 	L
7.2. Ensure clubs, associations and the community are effectively engaged in facility planning and program delivery.	Ongoing	<ul style="list-style-type: none"> • CGRC • Peak bodies • Community organisations/ User groups • Broader community 	L
7.3. Develop and maintain a database of club and association contacts and member numbers to support club development, club sustainability and ongoing communication between Council and recreation providers.	Short	<ul style="list-style-type: none"> • CGRC • Community organisations/ User groups • Peak bodies 	L

Strategy and Actions - Programs

Overall objective: Facilitate opportunities to grow participation in recreation, support community and participant development through the delivery of programs that promote active and healthy communities and deliver positive outcomes beyond recreation.

8. Strategy: Young people			
Encourage young people to safely participate in recreation activities within their community			
Rationale: Young adults and children are the largest proportion of the Australian population that participate in the majority of highly active recreation activities, with participation rates much higher, over double the rate of adults. Having young people involved in active recreation has many benefits including health, social and developmental. Ensuring places where young people participate are safe and welcoming is also a critical step for recreation providers.			
Actions	Timeframe	Partners	Resources
8.1. Facilitate 'Come n Try' days and similar participation events on a regular basis at different locations	Ongoing	<ul style="list-style-type: none"> • Peak bodies • Schools • CGRC • Community organisations/ User groups 	L
8.2. Ensure young people are protected and a safe environment is provided within clubs and service providers	Ongoing	<ul style="list-style-type: none"> • Peak bodies • Community organisations/ User groups • Education providers • CGRC 	L
8.3. Facilitate training and development programs for clubs in Child Protection requirements and policy development on a regular basis	Ongoing	<ul style="list-style-type: none"> • Peak bodies • NSW Government • CGRC • Community organisations/ User groups 	L

9. Strategy: Events, programs and services Facilitate and support events, programs and services that encourage an active community, build on the unique characteristics of the region and support regional development.			
Rationale: All community members and visitors should be provided with the opportunity to participate in recreation activities. The Cootamundra Gundagai Council has a role to play in supporting the community and recreational organisations in the delivery of events, programs and services. Events provide significant benefits and opportunities for the local community and attract visitors to the region, showcasing the unique environment and lifestyle.			
Actions	Timeframe	Partners	Resources
9.1. Assist community and recreation organisations to deliver successful events, programs and services through the provision of information, education and grant funding.	Ongoing	<ul style="list-style-type: none"> • Federal / State Government • Peak bodies • CGRC • Community organisations/ User groups • Broader community 	L
9.2. Support recreation events, programs and services that focus on traditionally under-represented residents such as: <ul style="list-style-type: none"> • young people • people from lower socio-economic backgrounds • persons with a disability • Aboriginal and Torres Strait Islander people • older people 	Ongoing	<ul style="list-style-type: none"> • CGRC • Community organisations/ User groups • Peak bodies • State and Federal Government 	L
9.3. Attract and support events that contribute to the development of recreation whilst also aligning with the directions of the Council's Community Strategic Plan 2018-28.	Ongoing	<ul style="list-style-type: none"> • CGRC • Peak bodies • Community organisations/ User groups • Local business groups • State Government 	M

9. Strategy: Events, programs and services Facilitate and support events, programs and services that encourage an active community, build on the unique characteristics of the region and support regional development.			
9.4. Develop and promote an events calendar and make it available on the Council's website	Immediate	<ul style="list-style-type: none"> • CGRC • Community organisations/ User groups 	L

DRAFT

10. Strategy: Resourcing			
Obtain the necessary resources to effectively coordinate the implementation of the Recreation Needs Study			
Rationale: A significant level of resources will be required to implement all of the actions and initiatives identified within this Plan including staff resources, internal and external funding support. There is an opportunity to access a range of funding programs in which recreation developments and programs are eligible to be funded.			
Actions	Timeframe	Partners	Resources
10.1. Allocate an annual recreation budget and consider creating a Recreation Development position within the Cootamundra Gundagai Regional Council to support the implementation of the Study recommendations.	Ongoing	<ul style="list-style-type: none"> CGRC 	M
10.2. Utilising the <i>Potential Funding Opportunities</i> section of this document develop a register of external funding and grant opportunities including state and federal government, peak bodies, charitable trusts and foundations that provide funding for recreation development initiatives.	Short	<ul style="list-style-type: none"> CGRC 	L
10.3. Provide education and information sessions on accessing grant funding for recreation development initiatives.	Ongoing	<ul style="list-style-type: none"> CGRC Peak bodies Community organisations/ User groups State and Federal Government Sport NSW 	L
10.4. Assist clubs, associations and providers to gain external funding to contribute towards facility upgrades and developments, club development initiatives and participation programs.	Ongoing	<ul style="list-style-type: none"> CGRC Peak bodies Community organisations/ User groups 	L

11. Strategy: Communication			
Develop a range of informative and innovative communication initiatives to keep the community engaged and informed about recreation opportunities.			
Rationale: Improving communication and relationships with the community and recreation stakeholders is a key pillar of this Plan. Providing relevant and timely information through various communication platforms (e.g. phone, email, social media) will be required on a regular basis.			
Actions	Timeframe	Partners	Resources
11.1. Develop a specific web page/site dedicated to recreation that offers information on club development, events, funding opportunities, training and industry information. This could be incorporated into the Council's website or be a stand-alone site.	Short	<ul style="list-style-type: none"> • CGRC • Community organisations/ User groups • Peak bodies 	L
11.2. Market and promote recreation opportunities and club programs to the community. For example, social media posts, regular press releases or articles for local media highlighting local initiatives.	Short	<ul style="list-style-type: none"> • Community organisations/ User groups • Peak bodies • CGRC • Broad community 	L
11.3. Identify and promote new communication technologies and apps (e.g. Strava, AllTrails) that encourage greater participation in recreation.	Ongoing	<ul style="list-style-type: none"> • Community organisations/ User groups • Peak bodies • CGRC 	L

12. Strategy: Inclusion			
Develop programs and strategies to help address barriers and create opportunities for inactive and disadvantaged people and communities to participate in recreation activities.			
Rationale: Inclusive recreation is an important aspect of development within a community. The benefits of recreation are obtainable by all community members provided suitable access is provided. There is an opportunity to support, encourage and facilitate various initiatives and programs that target specific population groups.			
Action	Timeframe	Partners	Resources
12.1. Utilise existing and develop new innovative recreation participation programs.	Ongoing	<ul style="list-style-type: none"> Community organisations/ User groups Peak bodies CGRC State and Federal Government 	M
12.2. Enhance opportunities for the community to access recreation facilities and spaces for casual/informal play.	Ongoing	<ul style="list-style-type: none"> CGRC Community organisations/ User groups Broader community 	L
12.3. Develop and maintain participation initiatives that contribute to place making through activation of spaces.	Ongoing	<ul style="list-style-type: none"> Community organisations/ User groups CGRC Peak bodies Broader community 	L
12.4. Develop and maintain a variety of programs and activities that increase physical activity and health and well-being initiatives	Ongoing	<ul style="list-style-type: none"> Community organisations/ User groups Peak bodies CGRC Broader community 	L
12.5. Develop and maintain programs which facilitate partnerships between schools and local recreation clubs and associations to increase participation.	Ongoing	<ul style="list-style-type: none"> Schools Community organisations/ User groups Peak bodies CGRC 	L

13. Strategy: Pathways			
Develop programs and strategies to support local clubs and associations to improve player development and pathways for their activity			
Rationale: The Cootamundra Gundagai Regional Council has a key role in the provision of local and regional community level sporting and recreation opportunities. State and higher-level provision is typically provided for by State and Federal Government. Pathways to develop elite athletes commence at the local level and this is where the local community can play a significant role in the development of athletes, officials and coaches.			
Action	Timeframe	Partners	Resources
13.1. Recruit high profile athletes from the Cootamundra Gundagai Regional Council areas as ambassadors for local sport.	Ongoing	<ul style="list-style-type: none"> Peak bodies Community organisations/ User groups CGRC 	L
13.2. Provide player development and pathway opportunities for local participants	Ongoing	<ul style="list-style-type: none"> Peak bodies Community organisations/ User groups CGRC 	L
13.3. Develop and maintain partnerships with local sporting clubs and associations to improve training and playing environments that support player development	Ongoing	<ul style="list-style-type: none"> Peak bodies Community organisations/ User groups CGRC 	L
13.4. Develop and maintain initiatives which increase and promote excellence in coaching and officiating.	Ongoing	<ul style="list-style-type: none"> Peak bodies Community organisations/ User groups NSW Office for Sport CGRC 	L

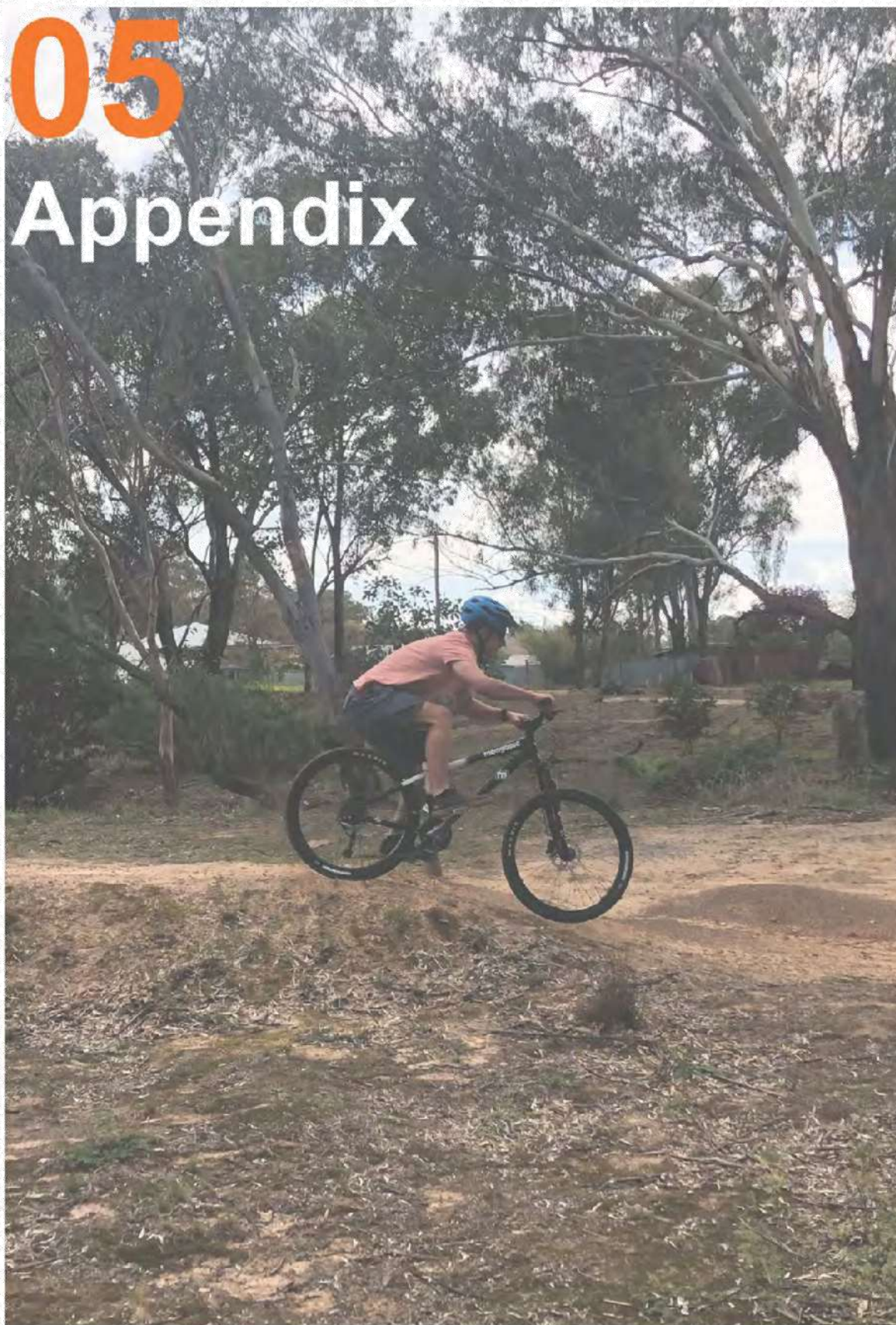
Our Communities

The following community profile pages have been developed to identify the key information relating to the development of this Strategy across the Council area, distinguished between town and villages.

The profile pages capture the demographic, broad themes, issues and opportunities identified through research and consultation and highlight the key facilities and their users. Refer to Appendix 1 for the nine complete community profiles.



05 Appendix



05 Appendix

Appendix 1: Profile Pages

DRAFT

01 Community Profile Coolac

Demographics and Statistics (2016):



Population:
SSC 216



Median Age:
38



Families:
51



Average
Children Per
Family: 0.8



All Private
Dwellings:
100



Median
Household
Income: \$1,089

Existing Sport and Recreation Facilities:



Clubs and organisations:

- Coolac Cricket Club
- Hall Management Committee

Community Events:

- Hall is utilised for community events 12 - 20 times per year, generally for weddings reunions, birthdays & meetings.
- Coolac Cricket matches and training are regular fixtures over the summer months.
- The Beehive Hotel consisting of a pub, cafe and motel is central to village activities.

Challenges + Opportunities:

- No mains water.
- Participant and volunteer numbers.
- Condition of existing facilities.
- Maintenance of facilities at safe and use-able standards.
- Securing funding/grants.
- Drawing visitors off the Hume Highway.
- Rail Trail development.
- Potential for the hall to function as a central precinct building.
- Potential to build on cricket heritage & achievements.

Consultation Vision/Themes:

- Create a multi-use and multi-generational precinct.
- Develop community pride through facilities.
- Celebrate both history and current achievements.
- Encourage visitors to utilise the recreation precinct.
- Meet the needs of the local community (health, social).
- Support recreational clubs (Coolac Cricket Club).
- Utilise the Memorial Hall for a wider variety of activities.
- Heritage walk opportunities.
- Rail Trail opportunities.

02 Facilities Audit

Coolac

Facilities Audit

1. Memorial Hall



Map Reference	1
Facility Scale	Local
Owner	Crown Land
Manager	Community
Key Facilities	- Open Hall - Stage - Kitchen - Toilets
Facility Condition	Satisfactory
Facility Usage	Low

General Notes:

- Ageing Asset
- Hall requires upgrades to bring it up to current building standards (i.e. insulation, store room, relocating kitchen within hall) to better cater to community needs.
- Installation of solar panels
- Installation of tank at rear to service and irrigate oval.
- The hall can be better utilised to cater to the cricket club, unstructured recreation users (i.e. Yoga, Tai-Chi) and events/meetings.

2. Cricket Oval



Map Reference	2
Facility Scale	Local
Owner	Crown Land
Manager	Community
Key Facilities	- Artificial turf pitch - Backstop
Facility Condition	Satisfactory
Facility Usage	Moderate

General Notes:

- Home to the Coolac Cricket Club who play approx. eight games per season.
- Satisfactory oval condition as there is no mains water connected.
- No perimeter fencing.
- Mesh backstop in poor condition.
- Artificial turf pitch satisfactory condition.
- No clubrooms (hall or local pub is utilised for presentations &/or events).

3. Cricket Nets



Map Reference	3
Facility Scale	District
Owner	Crown Land
Manager	Community
Key Facilities	- x2 Artificial turf cricket nets
Facility Condition	Excellent
Facility Usage	Moderate

General Notes:

- Newly installed x2 synthetic cricket nets.
- Excellent condition.
- Incomplete - step up to new nets. Additional works required to run up area to ensure levels are consistent.
- Cricket nets has one long side which could be used in the development of neighbouring disused courts.

02 Facilities Audit Coolac

4. Tennis Courts



Map Reference	4
Facility Scale	Local
Owner	Crown Land
Manager	Community
Key Facilities	- x2 tennis courts (disused) - Lighting - Fencing - Umpire seat
Facility Condition	Very poor
Facility Usage	Disused
General Notes: <ul style="list-style-type: none"> Natural grass courts are overgrown and disused. No current Tennis Club. Nets around exterior are in very poor condition. Light poles are in very poor condition. 	

5. Tennis Clubrooms



Map Reference	5
Facility Scale	Local
Owner	Crown Land
Manager	Community
Key Facilities	Tennis clubrooms
Facility Condition	Very poor
Facility Usage	Disused
General Notes: <ul style="list-style-type: none"> Aged Facility. Unserviceable. 	

6. Amenities



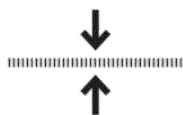
Map Reference	6
Facility Scale	Local
Owner	Crown Land
Manager	Community
Key Facilities	Amenities block Picnic shelter
Facility Condition	Excellent
Facility Usage	Moderate
General Notes: <ul style="list-style-type: none"> Amenities are in very good condition and meets the needs of the precinct users. Picnic shelter is durable (cement seating & table) with basic tin roof shelter. 	

01 Community Profile Adjungbilly

Demographics and Statistics (2016):



Population:
SSC 81



Median Age:
36



Families:
22



Average
Children Per
Family: 1



All Private
Dwellings:
43



Median
Household
Income: \$1,375

Existing Sport and Recreation Facilities:



Clubs and organisations:

- Hall Management Committee

Community Events:

- Tennis coaching lessons
- Arabin Cup T-Ball at Binalong
- Small Schools Touch Football competition at Wee-Jasper Public School

Challenges + Opportunities:

- Smallest village in the CGRC
- Bongongo Public School is the focal point in the community
- Residents travel to Gundagai or Tumut to access retail and other services.
- Future upgrades to Adjungbilly Rd through the Roads to Recovery Program will improve transportation links.

Consultation Vision/Themes:

- The hall is an important community asset utilised by vary user groups (i.e. Puggles Mobile Children's Services Van, School, Bushfire Brigade, wild dog meetings).
- The hall could benefit from a large screen and projector for education/training purposes.
- A number of local people are associated with the Coolac Cricket Club and a training facility (nets) in Adjungbilly would be beneficial - ideally located near the tennis court.

02 Facilities Audit Adjungbilly

Facilities Audit

1. Community Hall



Map Reference	1
Facility Scale	Local
Owner	Crown Land
Manager	Community
Key Facilities	- Open Hall - Kitchen - Toilets
Facility Condition	Good
Facility Usage	Low
General Notes: <ul style="list-style-type: none"> • Installation of a new BBQ at Adjungbilly Hall SCCF. 	

2. Tennis Courts



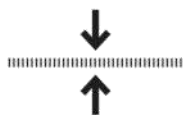
Map Reference	2
Facility Scale	Local
Owner	Crown Land
Manager	Community
Key Facilities	- Synthetic Tennis Court
Facility Condition	Good
Facility Usage	Moderate
General Notes: <ul style="list-style-type: none"> • Tennis court was recently upgraded as a result of a \$130,000 SCCF • The Bongongo Public School utilises the court. • Tennis coaching lessons available at designated times. 	

01 Community Profile Muttama

Demographics and Statistics (2016):



Population:
131



Median Age:
33



Families:
33



Average
Children Per
Family: 1.3



All Private
Dwellings:
44



Median
Household
Income: \$1,416

Existing Sport and Recreation Facilities:



Clubs and organisations:

- Hall Management Committee

Community Events:

- Australia Day/Christmas event
- Occasional community events (i.e. vintage tractor stop point, wedding)
- Hall potentially utilised for community recreation after staged repairs (i.e. art courses, film theatre events, Vietnam war veterans memorial).

Challenges + Opportunities:

- Participant and volunteer numbers.
- Very poor condition of existing facilities.
- Facilities do not meet current day standards.
- Management structure.
- Potential for the hall to function as a central precinct building.
- Drawing visitors.
- Potential to build on free camping market.

Consultation Vision/Themes:

- Reduce the number of courts to 1-2 and retain gravel surface (1 multipurpose)
- Community trying to form a trust to manage the recreation precinct so they can apply for funds.
- Playground equipment aged, requires renewal.
- Oval is not utilised for sport, visitors camp for free.
- Heritage consultant has completed a report with staged works plan for hall.
- Retain Hall for heritage preservation.

02 Facilities Audit Muttama

Facilities Audit

1. Memorial Hall



Map Reference	1
Facility Scale	Local
Owner	Crown Land
Manager	Community
Key Facilities	-Open Hall - Stage - Kitchen - Toilets (rear)
Facility Condition	Very Poor
Facility Usage	Low
General Notes: <ul style="list-style-type: none"> • Hall is characteristic of local building heritage • Heritage consultant report complete. • Staged program of repairs (Priority - foundation/ structural repairs) • Approved funding SCCF (Restumping \$140,707) • Once refurbished the war memorabilia will be returned and the community will potentially use the hall for weddings, art courses, film/theatre productions etc. • Toilets at the rear in very good condition. 	

2. Playground



Map Reference	2
Facility Scale	Local
Owner	Crown Land
Manager	Community
Key Facilities	-Slide -Swing -Turn table
Facility Condition	Poor
Facility Usage	Moderate
General Notes: <ul style="list-style-type: none"> • Play equipment is dated and may not meet current Australian Standards. 	

3. Oval



Map Reference	3
Facility Scale	Local
Owner	Crown Land
Manager	Community
Key Facilities	-Oval (disused)
Facility Condition	Very Poor
Facility Usage	Disused
General Notes: <ul style="list-style-type: none"> • Oval is disused. • Oval area is used by free campers who are self sufficient. 	

02 Facilities Audit Muttama

4. Tennis Courts



Map Reference	4
Facility Scale	Local
Owner	Crown Land
Manager	Community
Key Facilities	-Tennis Courts (disused)
Facility Condition	Very Poor
Facility Usage	Disused
General Notes: <ul style="list-style-type: none"> • Gravel courts are overgrown and disused. • No current Tennis Club. • Nets around exterior are in very poor condition. • Light poles are in very poor condition. • Club house in poor condition. 	

01 Community Profile Wallendbeen

Demographics and Statistics (2016):



Existing Sport and Recreation Facilities:



Clubs and organisations:

- Hall Management Committee
- Wallendbeen Tennis Club

Community Events:

- Tennis competitions (4 nights a week / 9 mths of the year)
- Wallendbeen Markets (every month).
- Regional School Athletics (annual) at Barry Grace Oval
- Active Farmers at the Memorial Hall, along with occasional meetings/events

Challenges + Opportunities:

- Participant and volunteer numbers (aging population)
- Maintenance of facilities (volunteers).
- Strong tennis club that services the village and attracts participants from out of town.
- Disconnect between Wallendbeen Recreation Ground and the town centre.
- Palmer Park Youth Precinct
- Drawing visitors off the Highways.
- Stately Memorial Hall.

Consultation Vision/Themes:

- Tennis competition is strong, however access to courts is steep, clubrooms aged, toilets unable to cater to large numbers.
- Grant funding approved for upgrades at Wallendbeen Recreation Ground (ideas include: lighting up kiosk, installing seating, splash pad, powered sites, solar power, shade over outdoor equipment, playground).
- Linking Barry Grace Oval to town via a pedestrian bridge.
- Heritage Focus (i.e. Silo Trail)

02 Facilities Audit Wallendbeen

Facilities Audit

1. Recreation Ground



Map Reference	1
Facility Scale	Local
Owner	Crown Land
Manager	Community
Key Facilities	-Oval -Artificial Turf Pitch -Picket Fence -Kiosk/Changerooms
Facility Condition	Good
Facility Usage	Low
General Notes: <ul style="list-style-type: none"> • Barry Grace Oval is very picturesque with a white picket fence. • Lighting SCCF \$98,397 • Playground equipment may not meet Australian Standards. • Kiosk/Changeroom usage levels are very low as there are no organised sports. • Regional school sports athletics utilise the oval annually. 	

2. Exercise Equipment



Map Reference	2
Facility Scale	Local
Owner	Crown Land
Manager	Community
Key Facilities	- Outdoor Exercise Equipment
Facility Condition	Excellent
Facility Usage	Moderate
General Notes: <ul style="list-style-type: none"> • The 4 stations provide 8 options of exercise. • Artificial turf provides surety underfoot. • Exposed to the weather elements. 	

3. Palmer Park



Map Reference	3
Facility Scale	District
Owner	Crown Land
Manager	CGRC
Key Facilities	-Rage Cage -x2 Playground
Facility Condition	Excellent
Facility Usage	Moderate
General Notes: <ul style="list-style-type: none"> • Rage Cage has basketball and soccer goals. • 1 x Traditional playground with swings, slides etc with picnic table. • 1x Modern playground with shade structure offering climbing & balance activities. 	

02 Facilities Audit Wallendbeen

4. Tennis Precinct



Map Reference	4
Facility Scale	District
Owner	Crown Land
Manager	Community
Key Facilities	-x3 Tennis Courts with lighting -Clubroom -Toilets
Facility Condition	Satisfactory
Facility Usage	Moderate
General Notes: <ul style="list-style-type: none"> • Courts are in good condition. • Court lighting allows evening games 4 nights a week. • Clubhouse facility is aged, however well maintained. • Access from the clubhouse to courts is unsafe due to the large gradient change. • Car parking is unstructured. • Toilets are in poor condition and do not meet the needs of the users at busy times. • Swing in poor condition. 	

5. Memorial Hall



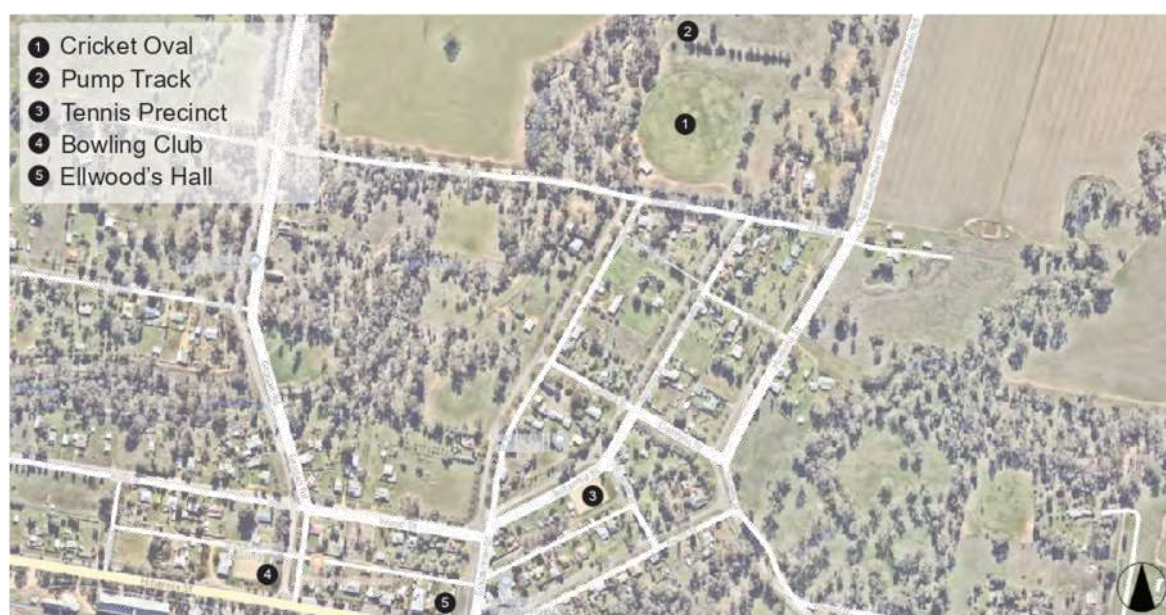
Map Reference	5
Facility Scale	Local
Owner	Crown Land
Manager	Community
Key Facilities	- Open Hall - Stage - Kitchen - Toilets
Facility Condition	Good
Facility Usage	Low
General Notes: <ul style="list-style-type: none"> • Memorial Hall 1922 is an iconic building within the village and has strong heritage signage information. • Continue to enhance and maintain to meet the needs of the community. • Upgrade in line with legislative requirements (i.e. DDA) 	

01 Community Profile Stockinbingal

Demographics and Statistics (2016):



Existing Sport and Recreation Facilities:



Clubs and organisations:

- Hall Management Committee
- Tennis Club
- Bowls Club

Community Events:

- Active Farmers
- Tai Chi
- Stop & Mingle (History room)

Challenges + Opportunities:

- Participant and volunteer numbers (aging population)
- Maintenance of facilities (volunteers)
- Active tennis club that services the village.
- Active bowls club that provides opportunities for social and community interaction.
- An already activated Hall offering post office, history room, recreation pursuits.
- No active cricket club or regular user of the oval.
- Drawing visitors

Consultation Vision/Themes:

- Recreation ground site has no structure to its layout.
- Opportunity to enhance caravan/camping facilities.
- Pump track location is at the rear of the site (not integrated)
- Toilet blocks at both the Rec Ground and King George V Park require maintenance/upgrade.
- Shade over playgrounds.
- Opportunity to create a cemetery trail walk
- Private/Public partnership with hotel for pool use.

02 Facilities Audit Stockinbingal

Facilities Audit

1. Cricket Oval



Map Reference	1
Facility Scale	Local
Owner	Crown Land
Manager	Community
Key Facilities	-Oval -Artificial turf pitch -John Sherry Stand - Kiosk building -Amenities block
Facility Condition	Satisfactory
Facility Usage	Low
General Notes: <ul style="list-style-type: none"> • Informal layout of site • Oval & artificial turf pitch in good condition • Kiosk building very basic and in poor condition • John Sherry Stand in satisfactory condition • Seating around perimeter of oval and x1 light • Separate amenities block • No active cricket club • Powered sites available 	

2. Pump Track



Map Reference	2
Facility Scale	District
Owner	Crown Land
Manager	CGRC
Key Facilities	-Pump Track
Facility Condition	Excellent
Facility Usage	Moderate
General Notes: <ul style="list-style-type: none"> • Bitumen Pump Track (Grant from the NSW Government's Stronger Communities Round 2). • Located at the rear of the site (less passive surveillance). • No formal access pathways to reach pump track. • Bark on surrounding graded mounds is not the most suitable material choice. 	

3. Tennis Precinct



Map Reference	3
Facility Scale	Local
Owner	Crown Land
Manager	CGRC
Key Facilities	-x2 Tennis Courts -Clubroom -Storage Shed
Facility Condition	Excellent
Facility Usage	Moderate
General Notes: <ul style="list-style-type: none"> • Tennis Precinct is located in King George V Park, strategically across the road from the school. • Courts are in excellent condition (SCCF \$98,600). • Demountable clubrooms are in a satisfactory condition, with an additional galvanised storage shed. • King George V Park has a basic amenities block which requires attention. The park also has a playground, ANZAC memorial & picnic seating. 	

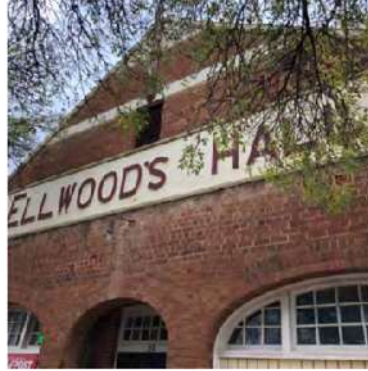
02 Facilities Audit Stockinbingal

4. Bowling Club



Map Reference	4
Facility Scale	District
Owner	Crown Land
Manager	Community
Key Facilities	-Bowling Green -Clubrooms
Facility Condition	Good
Facility Usage	Moderate
General Notes: <ul style="list-style-type: none"> • Bowling Green (grass) • Lighting (x6) • Seating • Cloth Shades • Clubhouse • Storage Shed • The bowling club provides opportunities for social and community interaction. 	

5. Ellwood's Hall



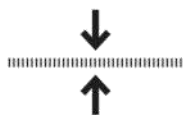
Map Reference	5
Facility Scale	Local
Owner	Crown Land
Manager	Community
Key Facilities	- Open Hall - Stage - Kitchen - Toilets
Facility Condition	Satisfactory
Facility Usage	Moderate
General Notes: <ul style="list-style-type: none"> • Renovations to Ellwood's Hall - Grant Application May 2019 • History Room, with plans to extend to a tea room. • Australia Post located in the Hall. 	

01 Community Profile Nangus

Demographics and Statistics (2016):



Population:
SSC 205



Median Age:
40



Families:
61



Average
Children Per
Family: 1



All Private
Dwellings:
90



Median
Household
Income: \$1,125

Existing Sport and Recreation Facilities:



Clubs and organisations:

- Hall Management Committee

Community Events:

- Small Schools Bi-annual event

Challenges + Opportunities:

- Participant and volunteer numbers
- Maintenance of facilities (volunteers)
- A hub location (hall, playground, courts, oval)
- No regular user of the oval (bi-annual small schools event only)
- No organised sport on courts
- Drawing visitors

Consultation Vision/Themes:

- Maintain and upgrade the Hall to meet the needs of the community.
- Maintain the courts, upgrade shelter, BBQ, lighting.
- Upgrade shade over playground
- Create a bike skills area/dirt mounds
- Promote Nangus as a convenient destination to base yourself to explore the surrounding district (i.e. boating, nature enthusiast, heritage).
- Free camping in oval area.
- Install public toilets.

02 Facilities Audit Nangus

Facilities Audit

1. Public Hall



Map Reference	1
Facility Scale	Local
Owner	Crown Land
Manager	Community
Key Facilities	- Open Hall - Stage - Kitchen - Toilets
Facility Condition	Satisfactory
Facility Usage	Low
General Notes: <ul style="list-style-type: none"> The Public Hall is at the face of the recreation precinct. Set behind the building are the courts and playground. Continue to enhance and maintain to meet the needs of the community. Upgrade in line with legislative requirements (i.e. DDA) 	

2. Playground



Map Reference	2
Facility Scale	Local
Owner	Crown Land
Manager	Community
Key Facilities	-Playground
Facility Condition	Excellent
Facility Usage	Low
General Notes: <ul style="list-style-type: none"> The playground is not easily visible from the road. It provides for young children with a small slide, climbing wall etc. and offers older children opportunities on larger swings. 	

3. Tennis Courts



Map Reference	3
Facility Scale	Local
Owner	Crown Land
Manager	Community
Key Facilities	- x2 Tennis - x1 Netball - x2 Shelters
Facility Condition	Good
Facility Usage	Low
General Notes: <ul style="list-style-type: none"> The courts offer tennis and netball opportunities. Lights require safety check. BBQ Shelter requires maintenance Wooden Tennis Shelter very 'rustic', requires assessment for safety. 	

02 Facilities Audit

Nangus

4. Oval



Map Reference	4
Facility Scale	Local
Owner	Crown Land
Manager	Community
Key Facilities	- Oval - Cement Cricket Pitch
Facility Condition	Very poor
Facility Usage	Disused
General Notes: <ul style="list-style-type: none"> • The Oval is disused for the majority of time and is used only bi-annually for a small schools event. • There is an opportunity to use this space for alternative activities (i.e. caravan/camping) to activate the space and increase usage of courts and playground. 	

01 Community Profile Tumblong

Demographics and Statistics (2016):



Existing Sport and Recreation Facilities:



Clubs and organisations:

- Hall Management Committee

Community Events:

- Occasional Meetings/Events (i.e. weddings, funerals)

Challenges + Opportunities:

- Participant and volunteer numbers
- Families are moving to the district for small rural holdings and lifestyle.
- Maintenance of facilities (volunteers)
- Acquisition of additional land (property boundary approval)
- No organised sports
- Disused Courts
- Disused Recreation Ground
- History (St James Church, Hannah Jane 1921)
- Drawing visitors

Consultation Vision/Themes:

- Maintain and upgrade hall to meet the needs of the community.
- Address slope in front of hall and courts
- Install new adventure playground (focus on natural feel and look) after acquisition.
- Tree planting for shade and new bbq, tables etc.
- New Courts x1 tennis x1 multi-purpose
- Support recreation opportunities (i.e. yoga 6 week course)
- Heritage trail/ Rail Trail

02 Facilities Audit Tumblong

Facilities Audit

1. War Memorial Hall



Map Reference	1
Facility Scale	Local
Owner	Crown Land
Manager	Community
Key Facilities	- Open Hall - Stage - Kitchen - Toilets
Facility Condition	Satisfactory
Facility Usage	Low
General Notes: <ul style="list-style-type: none"> • Continue to enhance and maintain the War Memorial Hall to meet the needs of the community. • Address slope in front of hall and courts • Upgrade in line with legislative requirements (i.e. DDA) 	

2. Tennis Courts



Map Reference	2
Facility Scale	Local
Owner	Crown Land
Manager	Community
Key Facilities	-x2 tennis courts (disused)
Facility Condition	Very Poor
Facility Usage	Disused
General Notes: <ul style="list-style-type: none"> • The two grass courts are overgrown and disused. 	

01 Community Profile Gundagai

Demographics and Statistics (2016):



Existing Sport and Recreation Facilities:



Clubs and organisations:

- Refer to each individual facility

Community Events:

- Battle of the Bidgee
- Gundagai Campdraft
- NSW CDE Championships
- Snake Gully Cup Festival
- Gundagai Rodeo
- Gundagai Show
- Gundagai Horse Trials

Challenges + Opportunities:

- Opportunity to encourage events targeting the corporate market due to the proximity to Canberra International Airport.
- No indoor sporting facility
- Increase female participation in sport.
- Potential Jackalass Trail to link villages.
- 2 primary sporting hubs, with well defined usages.
- Volunteers management and recruitment.
- Pedestrian movement (Yarri Park, Owen Vincent/Stan Crowe Oval).

Consultation Vision/Themes:

- Pool improvements (i.e. splash pad, access)
- Promote Murrumbidgee River (canoe/kayak) lack of access
- Trail network offerings for all users (waker, MTB, horse).
- Upgrade turf wicket on Stan Crowe Oval
- Promote & improve events for visitors & locals.
- Support for organisations to develop and grow.
- Lack of Arts and Culture.
- Opportunities in Mudjarn Nature Reserve.
- Amalgamation differences.
- Upgrade outdated facilities.

02 Facilities Audit Gundagai

Facilities Audit

1. Anzac Park



Map Reference	1
Facility Scale	Regional
Owner	CGRC
Key User	Gundagai Adelong JRL
Key Facilities	
-Rugby League Field -Field Lighting -Clubroom Building -Changeroom Building -Open Shed with Seating -Bendigo Bank branded building -Entry Building (yellow)	
Facility Condition	Good
Facility Usage	Moderate
General Notes:	
<ul style="list-style-type: none"> • Premier Rugby League site. • There are x5 structures on the site. • Consolidate built structures. • Electric scoreboard. • Bitumen very close to the base of trees. 	

2. Owen Vincent Oval



Map Reference	2
Facility Scale	Regional
Owner	CGRC
Key Users: Gundagai Panthers Soccer Club, Gundagai Touch Football, Gundagai-Adelong Tigers JRL, Gundagai District Cricket Association.	
Key Facilities	
-Clubroom Building -Soccer Pitches / Cricket Oval -Cricket Nets	
Facility Condition	Good
Facility Usage	Moderate
General Notes:	
<ul style="list-style-type: none"> • Linkage improvements to Stan Crowe Oval. • Soccer Pitches (senior, junior & mini pitch) in good condition. • Cricket Oval with sight screen and artificial turf pitch in satisfactory condition. • Cricket Nets in satisfactory condition. • Car parking and pedestrian movement informal. 	

3. Stan Crowe Oval



Map Reference	3
Facility Scale	District
Owner	CGRC
Key User: Gundagai District Cricket Association, Gundagai-Adelong Tigers JRL, School	
Key Facilities	
- Cricket Oval / Rugby League Field / Grass Athletics Track - Amenities Block	
Facility Condition	Satisfactory
Facility Usage	Moderate
General Notes:	
<ul style="list-style-type: none"> • Cricket Oval with turf pitch and sight screens. • Turf pitch in poor condition requiring replacement. • Amenities building located between Anzac Park & Stan Crowe Oval. • Car parking and pedestrian movement informal. • Athletics track markings on oval, while field events are placed around the perimeter (incl. Anzac Park) • Rugby League Oval (lighting opportunities). 	

02 Facilities Audit Gundagai

4. Skate Park



Map Reference	4
Facility Scale	Local
Owner	CGRC
Key User	Children & Youth
Key Facilities	-Skate Park
Facility Condition	Satisfactory
Facility Usage	Moderate
General Notes: <ul style="list-style-type: none"> • Small concrete park with quarters & spine. • Suited to scooters and skateboards. • Located next to Yarri Park which has a playground, shelters & amenities block. • Proposed Gundagai large scale adventure playground and fitness centre program. Possible locations of exercise equipment along Yarri Park and along Murrumbidgee River bank at Gundagai (est. cost \$1m). 	

5. Heydon Park



Map Reference	5
Facility Scale	Local
Owner	CGRC
Key User	Nil
Key Facilities	-Hockey Field
Facility Condition	Very Poor
Facility Usage	Disused
General Notes: <ul style="list-style-type: none"> • Disused Hockey Field • Hockey goals (x2) are located along the fence/ tree line. • Flexible open space. 	

6. Golf & Bowls Club



Map Reference	6
Facility Scale	Regional
Owner	Gundagai District Services Club
Key User: Gundagai Golf and Bowls Club, Gundagai Services Tennis, Gundagai Squash	
Key Facilities: Bowling Greens, Golf Course, Tennis Courts & Squash Courts	
Facility Condition	Good
Facility Usage	High
General Notes: <ul style="list-style-type: none"> • Gundagai District Services Club Limited Sports Club • Bowling Greens (x2) in good condition. • Golf Course (18 hole) oldest in NSW. • Tennis Courts (2 in satisfactory condition, 1 very poor/disused). • Subsidence issue at rear of tennis courts and amenities block in poor condition. 	

02 Facilities Audit Gundagai

Facilities Audit

7. Olympic Pool



Map Reference	7
Facility Scale	District
Owner	CGRC
Key User: Gundagai Amateur Swimming Lifesaving Club	
Key Facilities: Outdoor 50m Pool, Outdoor Program Pool, Outdoor Toddler Pool, Clubroom/Changeroom, Covered playground, Gym.	
Facility Condition	Satisfactory
Facility Usage	Moderate
General Notes:	
<ul style="list-style-type: none"> Gundagai Amateur Swimming Club Clubroom opened in 1987. Capital works required to enable pool to meet contemporary standards and provide a safe and compliant facility into the future (i.e disabled ramp and resurfacing 2019). Shade structures & shelters structures vary in condition. 	

8. Outdoor Courts (GYC)



Map Reference	8
Facility Scale	District
Owner	CGRC
Key User: Gundagai Netball Club	
Key Facilities	
<ul style="list-style-type: none"> -Club/Storage Building -Netball Courts x3 -Netball/Basketball Court x1 	
Facility Condition	Satisfactory
Facility Usage	Moderate
General Notes:	
<ul style="list-style-type: none"> Lighting & amenities upgrade listed in CGRC - Delivery Program/ Operational Plan Club/storage room planned upgrade. Netball courts in good condition Netball/Basketball court in good condition 2 courts with lighting (4 posts). 	

9. Craft Workshop



Map Reference	9
Facility Scale	Local
Owner	CGRC
Key User: Lions Women's Craft Workshop & Men's Shed	
Key Facilities	Craft Workshop
Facility Condition	Satisfactory
Facility Usage	Moderate
General Notes:	
<ul style="list-style-type: none"> Provision of craft /workshop opportunities Delivery of community information (i.e. weight watchers in Cootamundra) 	

02 Facilities Audit Gundagai

10. Tumut Reserve



Map Reference	10
Facility Scale	Local
Owner	CGRC
Key User	Community
Key Facilities	
- Murrumbidgee River - Tumut Reserve	
Facility Condition	Satisfactory
Facility Usage	Moderate
General Notes: <ul style="list-style-type: none"> Tumut Reserve is located at the end of Tumut St in South Gundagai. The reserve is on the banks of the Murrumbidgee River. No built infrastructure. Informal pedestrian and vehicle movements. Access to river for canoe/ kayak users. 	

11. Showgrounds & Race Course



Map Reference	11
Facility Scale	Regional
Owner	CGRC
Key User:	Gundagai Rodeo Club, Gundagai Pony Club, Gundagai-Adelong Racing Club
Key Facilities:	Pony Club Arena, Rodeo Club Complex, Race Course & Showgrounds.
Facility Condition	Good
Facility Usage	Moderate
General Notes: <ul style="list-style-type: none"> Located on O I Bell Drive Prince Alfred Bridge is the longest timber viaduct in Australia Pony Club - Multipurpose Arena 2019 \$53,290 SCCF. Jumping arena in good condition. Gundagai Rodeo Club - Campdraft arena complex upgraded in 2017. Snake Gully Cup is one of the most popular country NSW racing events. Gundagai Pastoral & Agricultural Society manages the annual show. 	

12. Dog on the Tuckerbox Trail



Map Reference	12
Facility Scale	District
Owner	Traveling Stock Route
Key User	Community
Key Facilities	- Dog on the Tuckerbox - Sealed
Facility Condition	Poor
Facility Usage	Low
General Notes: <ul style="list-style-type: none"> Shared use trail (bicycles, walkers, horses, dogs on leash) Trailhead Springflat Drive in excellent condition. Links to central township are not clear. Underpass Hume Hwy to access the Dog on the Tuckerbox. Property owners on occasions close gates / restrict trail user movement. 	

02 Facilities Audit Gundagai

13. Gundagai Scouts



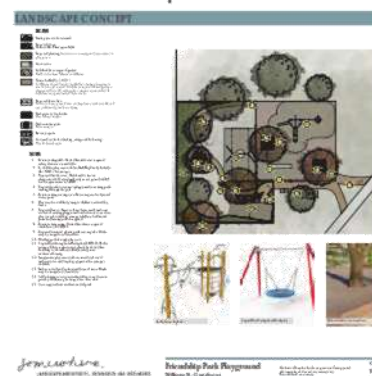
Map Reference	13
Facility Scale	Local
Owner	Scouts Australia
Key User	1st Gundagai Scouts Group
Key Facilities	
- Scout Hall - Climbing Wall	
Facility Condition	Satisfactory
Facility Usage	Moderate
General Notes:	
<ul style="list-style-type: none"> Scout Hall requires toilet upgrade, improvements with heating/insulation and could benefit from solar power installation. Thursday 4-6pm Carberry Park Climbing Wall \$89,000 SCCF has four climbing paths including speed climbing which will be an Olympic activity in Tokyo. The wall folds and is carried on a three metre trailer and can be used for fundraising activities. 	

14. Lindley Park



Map Reference	14
Facility Scale	Local
Owner	CGRC
Key User	Community
Key Facilities	
- Playspace & associated facilities	
Facility Condition	Poor
Facility Usage	Moderate
General Notes:	
<ul style="list-style-type: none"> Strategically located near South Gundagai Public School. \$50,000 grant received - NSW State Government Social Housing Community Improvement Fund - Rd 3 Access & Inclusion Committee recommended to adopt concept plan 2019 Grant application to remove existing cottage, install car park area, concrete path, toilet, BBQ area, shade sail, water fountain & rubber softfall elements in development. 	

15. Friendship Park



Map Reference	15
Facility Scale	Local
Owner	CGRC
Key User	Community & Dog owners
Key Facilities	
- Playspace & associated facilities	
Facility Condition	Poor
Facility Usage	Moderate
General Notes:	
<ul style="list-style-type: none"> Landscape Concept Plan adopted by CGRC. \$60,000 funding for upgrades 2019. Grant application for toilets, BBQ area, water fountain, seating and rubber softfall in development. Strategically located near Gundagai Public School. Shared use path runs through the park from O'Hagan St to William St Off-leash dog area requires infrastructure to separate dogs from playspace. 	

02 Facilities Audit Gundagai

16. Palmer Park



Map Reference	16
Facility Scale	Local
Owner	CGRC
Key User	Community
Key Facilities	
- Playspace and associated facilities	
Facility Condition	Satisfactory
Facility Usage	Moderate
General Notes: <ul style="list-style-type: none"> • Located 22 Lawson Drive. • Strategically located near Gundagai Public School. • Wear evident on rubber softfall under swing area requiring repair. • Future upgrades may include seating, water fountain & shade sail. 	

17. Carberry Park



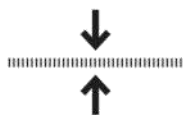
Map Reference	17
Facility Scale	Local
Owner	CGRC
Key User	Community
Key Facilities	
- Open space park with seating, parking, amenities and links to central precinct buildings/ services.	
Facility Condition	Satisfactory
Facility Usage	High
General Notes: <ul style="list-style-type: none"> • Proposed Carberry Park Development Concept includes a large scale adventure playground, picnic areas, play zones catering for children of all ages & a passive recreation zone. • Strategically located on Sheridan St next to the library and existing Council building. • Provides access for all to engage in healthy and active lifestyle choices. 	

01 Community Profile Cootamundra

Demographics and Statistics (2016):



Population:
UCL 5,669



Median Age:
51



Families:
1,490



Average
Children Per
Family: 0.5

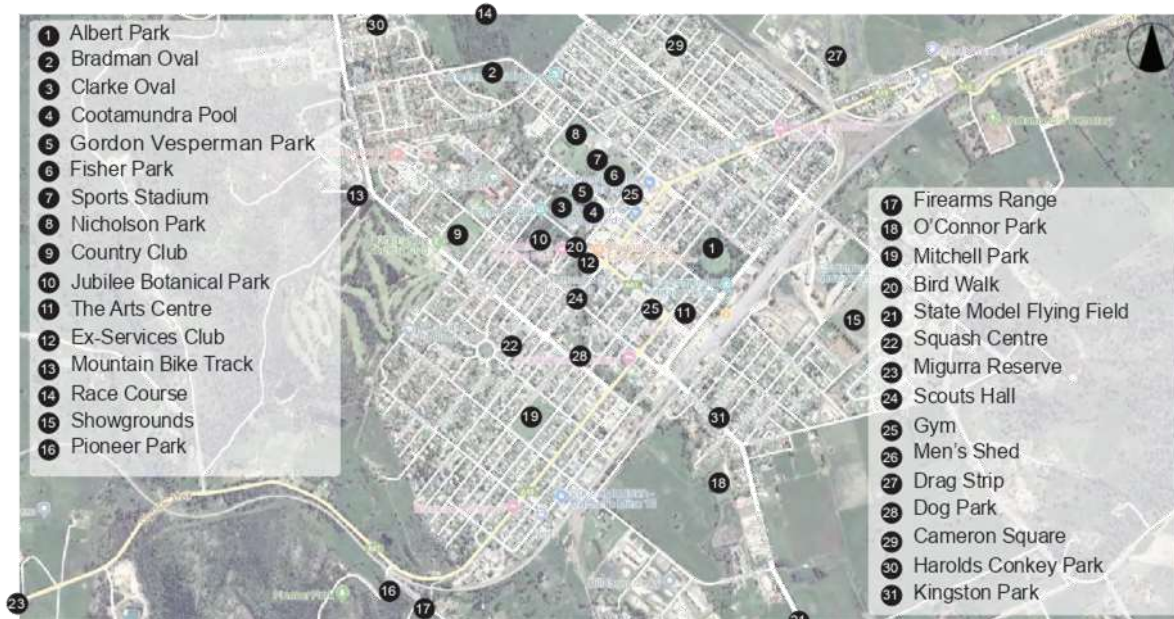


All Private
Dwellings:
2,797



Median
Household
Income: \$845

Existing Sport and Recreation Facilities:



Clubs and organisations:

- Refer to each individual

Community Events:

- Cootamundra Show.
- Cootamundra Cup.
- Cootamundra Rodeo.
- Cootamundra Arts Centre - TACC What's On.
- Cootamundra Sunday Markets.
- Haycarters Handicap Weekend - Cycling NSW.
- Drag Racing Meets.

Challenges + Opportunities:

- Opportunity to improve the central town sports and showgrounds facilities.
- Passionate Arts Community and a range of spaces.
- Maintaining and running an outdoor pool in conjunction with an indoor pool.
- Volunteers management and recruitment.
- Limited accommodation (161 rooms available)
- Rail Trail Development Plan
- Increase female participation in sport
- Improved linkages

Consultation Vision/Themes:

- Lack of programs and activities for older people, culturally & linguistically diverse, low income families.
- Upgrade outdated facilities.
- Facilities are expensive to maintain for some clubs.
- Support for organisations to develop and grow.
- Pool improvements (outdoor)
- Trail network offerings for all users (waker, MTB, horse).
- Promote & improve events for visitors & locals.
- Strong Arts

02 Facilities Audit Cootamundra

Facilities Audit

1. Albert Park



Map Reference	1
Facility Scale	District
Owner	CGRC
Key User: Cootamundra District Cricket Association	
Key Facilities: Cricket Oval, Turf Pitch, Kiosk/Storage Building & Amenities Block.	
Facility Condition	Satisfactory
Facility Usage	Moderate
General Notes: <ul style="list-style-type: none"> Cricket oval has a picket fence, sight screens, scoreboard. Kiosk/Storage building very basic. Limited seating Playground and public toilets also located with the park. Formal war memorial at entrance. 	

2. Bradman Oval



Map Reference	2
Facility Scale	District
Owner	CGRC
Key User: Cootamundra Junior District Cricket Association, Dog Owners.	
Key Facilities: Cricket Oval, Artificial Turf Pitch, Cricket Nets (x2) & Amenities Block. Off-Leash Dog Park.	
Facility Condition	Satisfactory
Facility Usage	Moderate
General Notes: <ul style="list-style-type: none"> Bradman Oval is located off Adam St close to Bradmans birthplace. A large stump and bat sign is in satisfactory condition. The oval is in satisfactory condition, with a good artificial turf pitch. The cricket nets are in poor condition and require upgrade. The amenities block is very basic. Ground maintenance levels could be improved. Off-Leash Dog Park 	

3. Clarke Oval



Map Reference	3
Facility Scale	District
Owner	CGRC
Key User: Cootamundra Blues Australian Rules Football Club, District Cricket Association	
Key Facilities: AFL / Cricket Oval, Clubrooms (construction), Kiosk with Shelter & Scoreboard with Shelter	
Facility Condition	Satisfactory
Facility Usage	Moderate
General Notes: <ul style="list-style-type: none"> Multipurpose Hall 2019 stage 2 SCCF \$272,800 Fenced playground on site for younger children. Field lighting (x4) Cricket pitch covered with soil. Scorers hut, player shelters and kiosk in satisfactory condition. Seating around perimeter of ground in very poor condition, requires replacement. Informal vehicle & pedestrian movement. 	

02 Facilities Audit Cootamundra

4. Cootamundra Pool



Map Reference	4
Facility Scale	Regional
Owner	CGRC
Key User: Cootamundra Swimming and Lifesaving Club, Cootamundra Beach Volleyball	
Key Facilities: 25m Indoor Heated Pool with Changeroom/Office Facilities, Outdoor 50m Pool, Program Pool & Toddler Pool, Grandstand, Diving Board and Volleyball Courts	
Facility Condition	Good
Facility Usage	High
General Notes:	
<ul style="list-style-type: none"> Indoor heated pool complex built in 2014. Outdoor pool age and condition an issue (i.e. turnover rates, DDA, grandstand, diving boards). Capital works required to enable pool to meet contemporary standards and provide a safe and compliant facility into future. Shade structures & shelters structures vary in condition. Beach Volleyball Courts fragmented from pool. 	

5. Gordon Vesperman Park



Map Reference	5
Facility Scale	District
Owner	CGRC
Key User: Children & Youth	
Key Facilities: Cootamundra Skate Park & Outdoor Exercise Equipment	
Facility Condition	Good
Facility Usage	Moderate
General Notes:	
<ul style="list-style-type: none"> Concrete Skate Park with a few hips, spine, ledges and small pyramid in good condition. One lighting pole on verge lights skate park. 5 outdoor exercise stations with artificial turf provide exercise options. Exposed to the weather elements. Drinking water fountain available near exercise equipment. Sealed path starts at Murray St, continues along Bourke St and finishes at the bridge on Olney St. 	

6. Fisher Park



Map Reference	6
Facility Scale	Regional
Owner	CGRC
Key User: Bulldogs Rugby League FC, Cootamundra APH&I Assoc Inc, Cootamundra Cycle Club	
Key Facilities: Rugby Field, Frank Smith Grandstand, Velodrome & Structures, Sheds/Buildings	
Facility Condition	Satisfactory
Facility Usage	Moderate
General Notes:	
<ul style="list-style-type: none"> Field in good condition. Frank Smith Grandstand in satisfactory condition Home of Bulldogs Rugby League. Perimeter seating is in poor condition. Old lighting and PA system. Velodrome & associated structures in poor condition. Show ground sheds/buildings in satisfactory condition. Site would benefit from Master Plan. 	

02 Facilities Audit Cootamundra

Facilities Audit

7. Sports Stadium



Map Reference	7
Facility Scale	District
Owner	CGRC
Key User:	Cootamundra Basketball Association
Key Facilities:	Indoor Stadium 2 Multipurpose Courts (i.e. basketball, badminton)
Facility Condition	Satisfactory
Facility Usage	Moderate
General Notes: <ul style="list-style-type: none"> The indoor stadium is connected to the Frank Smith Grandstand. Aged indoor facility with tired changerooms and amenities. Synthetic flooring. Caters for community level sport. 	

8. Nicholson Park



Map Reference	8
Facility Scale	Regional
Owner	CGRC
Key User:	Cootamundra Junior Rugby League Club, Town Tennis Club Inc, Netball, Amateur Basketball
Key Facilities:	Michael Dabin Field, Ned Miller Field & Shelter, Barry Crick Field & Clubroom, Tennis Courts & Clubroom, Outdoor Netball/Basketball Courts
Facility Condition	Good
Facility Usage	Moderate
General Notes: <ul style="list-style-type: none"> Junior Rugby League Club, shelters and amenities block in good condition. Playing Field Surfaces Rejuvenation SCCF \$60,000 Tennis courts upgraded 2018 resurfacing, installation of hot shots courts & fencing. Tennis clubrooms in satisfactory condition. Outdoor Netball/Basketball courts, lighting & shed in satisfactory condition. 	

9. Country Club



Map Reference	9
Facility Scale	District
Owner	Cootamundra Country Club
Key User:	Cootamundra Rugby Union Club, Bowling, Croquet and Golf Clubs.
Key Facilities:	Club, Bowling Green, Croquet Green, Golf Course and Rugby Fields with Clubroom Complex
Facility Condition	Satisfactory
Facility Usage	Moderate
General Notes: <ul style="list-style-type: none"> New Rugby clubrooms complex constructed 2019. Home of the Cootamundra Rugby Club. Basic field lighting. Carpark in poor condition due to building works. CGRC manages the Country Club Oval Complex Opposite is the Country Club with bowling green, croquet club and golf course are managed by the Country Club. 	

02 Facilities Audit Cootamundra

10. Jubilee Botanical Park



Map Reference	10
Facility Scale	District
Owner	CGRC
Key User	Community
Key Facilities: Captains Walk, Playgrounds, Shelters, Amenities, Sealed Path within Jubilee Botanical Park	
Facility Condition	Good
Facility Usage	High
General Notes:	
<ul style="list-style-type: none"> • The Captains Walk features 42 bronze sculptures of Australian Test Cricket Captains, along with Unaarrimim the leading Aboriginal player in the first Australian cricket team to tour England in 1868. • Tourist attraction. • Strategically located near the Cootamundra Caravan Park. • Passive recreation space. 	

11. The Arts Centre



Map Reference	11
Facility Scale	District
Owner	CGRC
Manager	Creative Arts Inc
Key Facilities: The Exhibition Room, The Tin Shed Theatre 2011, The Visual Arts Studio	
Facility Condition	Good
Facility Usage	Moderate
General Notes:	
<ul style="list-style-type: none"> • The Cootamundra Creative Arts Inc. • The Creative Arts & Cultural Centre Committee remains as a Section 355 Committee. • Range of spaces for performing arts activities and events. • Grant to prepare a business plan for its future. • The Arts Centre Rehearsal Space SCCF \$122,294 	

12. Ex-Services Club



Map Reference	12
Facility Scale	Regional
Owner	Not-for-profit Company Ltd
Manager	Directors
Key Facilities: Bistro/ Function Areas, Bowling Green with Clubroom & Associated Facilities.	
Facility Condition	Good
Facility Usage	High
General Notes:	
<ul style="list-style-type: none"> • Bowling green with clubrooms overlooking the greens. • Storage sheds and covered BBQ area. • Retractable shade awnings at one end of the greens. 	

02 Facilities Audit Cootamundra

Facilities Audit

13. Mountain Bike Track



Map Reference	13
Facility Scale	District
Owner	CGRC
Key User: Cootamundra Cycling Club	
Key Facilities: Mountain Bike Tracks, Walking Tracks, Informal Car Parking Area with Trailhead Sign.	
Facility Condition	Satisfactory
Facility Usage	Moderate
General Notes:	
<ul style="list-style-type: none"> • 2017 CGRC & SCCF \$50,000 for development of mountain bike and walking tracks (Cycle Club). • Trail Head Signage improvement, align to MTB Standards (i.e. green). • Wayfinding signage satisfactory. • Continue to enhance MTB tracks & delineate the trails shared with walkers. • Land parcel could benefit from removal of debris (i.e. rusted metal). • Informal car parking, opportunity to improve. 	

14. Race Course



Map Reference	14
Facility Scale	Regional
Owner	Turf Club
Key User: Turf Club	
Key Facilities: Race Course (grass & sand), Stables & Associated Facilities, Grandstand & Amenities	
Facility Condition	Good
Facility Usage	Moderate
General Notes:	
<ul style="list-style-type: none"> • SCCF Turf Club Upgrade \$81,970 • It hosts 4 meetings annually including the Cootamundra Cup and Sires Stakes. • The club has been in continuous operation for over 120 years. 	

15. Showgrounds



Map Reference	15
Facility Scale	District
Owner	CGRC
Manager: Showground Users Committee	
Key Facilities: Show Arena / Trotting Track, Pavilions / Sheds, Caravan/ Camping Sites and Amenities Block	
Facility Condition	Satisfactory
Facility Usage	Moderate
General Notes:	
<ul style="list-style-type: none"> • Showground Users Section 355 Committee (APH&I, Machinery Restoration Society, Pony Club, Kennel Club, Antique Motor Club, Harness Racing Club, Riding for the Disabled). • Signage dated, not in keeping with CGRC style. • Unpowered or powered sites available. • 2016 \$90,931 for a multi-purpose shed SCCF. 	

02 Facilities Audit Cootamundra

16. Pioneer Park



Map Reference	16
Facility Scale	District
Owner	CGRC
Key User: Community	
Key Facilities: Bushland Reserve with Lookout, Walking & Horse Riding Trails, MTB Trails, Picnic Facilities	
Facility Condition	Good
Facility Usage	High
General Notes: <ul style="list-style-type: none"> • Walking tracks (i.e. Obelisk Loop Track) in poor condition. Requires track maintenance, wayfinding and trail head signage that meet walking track guidelines. • Numbered plant signage (i.e 14 Spearwood Wattle) no trail information. • Alignment of horse trails unclear. • Iconic views of township at Obelisk. • Informal carpark with erosion problems. 	

17. Firearms Range



Map Reference	17
Facility Scale	District
Owner	CGRC
Key User: Cootamundra Rifle Club	
Key Facilities: Firearms Ranges, Clubroom & Amenities, Shipping Containers/Shelters, Wooden Building & Brick Huts.	
Facility Condition	Satisfactory
Facility Usage	Moderate
General Notes: <ul style="list-style-type: none"> • Cootamundra Rifle Club facilities upgrade SCCF \$63,015. • Adhoc buildings and associated facilities. • Consolidate underutilised built facilities. 	

18. O'Connor Park



Map Reference	18
Facility Scale	District
Owner	CGRC
Key User: Cootamundra Strikers Soccer Club	
Key Facilities: Soccer Pitch, Clubrooms with verandah, Spectator flat roof Shelter, Player shelters & Storage Shed	
Facility Condition	Satisfactory
Facility Usage	Moderate
General Notes: <ul style="list-style-type: none"> • Lighting for O'Connor Park Home of the Cootamundra Strikers Soccer Club SCCF \$98,397. • Entry off Betts St undeveloped. • Informal car parking. 	

02 Facilities Audit Cootamundra

Facilities Audit

19. Mitchell Park



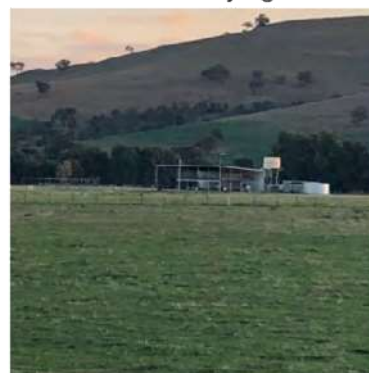
Map Reference	19
Facility Scale	District
Owner	CGRC
Key User:	Cootamundra Junior Soccer
Key Facilities:	Soccer Pitches & Cricket Oval, Artificial Turf Pitch, Changerooms/Kiosk Building and Amenities Block.
Facility Condition	Satisfactory
Facility Usage	Moderate
General Notes:	
<ul style="list-style-type: none"> • Changeroom/kiosk/small amenities building in satisfactory-poor condition. • Amenities block in good condition. • Artificial turf cricket pitch in good condition. • Soccer fields and goals in good condition for junior games. • Mesh portable grandstand in poor condition. • Field light on Cowcumbula St end, condition & usage to be determined. 	

20. Bird Walk



Map Reference	20
Facility Scale	Local
Owner	CGRC
Key User:	The Muttama Creek Regeneration Group
Key Facilities:	Mutta Creek - Corrugated Bird Structures
Facility Condition	Good
Facility Usage	High
General Notes:	
<ul style="list-style-type: none"> • Muttama Creek Regeneration Group is actively re vegetating the creek. • The corrugated birds were created by the Men's Shed. • The bird walk requires a review of the trail alignment, trail head signage and marketing material. 	

21. State Model Flying Field



Map Reference	21
Facility Scale	State
Manager:	Minature Aero Sports NSW Inc
Key Facilities:	Elevated Covered Deck with Showers and Toilets Facilities.
Facility Condition	Good
Facility Usage	Moderate
General Notes:	
<ul style="list-style-type: none"> • The Field can caters for <ul style="list-style-type: none"> • Jets • Helicopters • Gliders and Tugs • Pylon • Pattern • Old Timber • Control line • Scale 	

02 Facilities Audit Cootamundra

22. Squash Centre



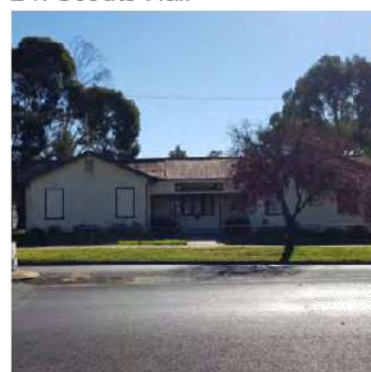
Map Reference	22
Facility Scale	Local
Key User: Cootamundra Squash Association	
Key Facilities	
- Squash Centre	
Facility Condition	Satisfactory
Facility Usage	Moderate
General Notes: <ul style="list-style-type: none"> • Squash court renovation SCCF \$97,655 • Located within a residential area. 	

23. Migurra Reserve



Map Reference	23
Facility Scale	Local
Owner	Dudauman Frampton Landcare Group (Trustee)
Manager	'as above'
Key Facilities: 20ha Migurra Reserve (Ironbark/Gey Box Woodland) & Walking Track.	
Facility Condition	Satisfactory
Facility Usage	Low
General Notes: <ul style="list-style-type: none"> • 750m walking track. • Interpretive signage(i.e. soil crusts, mistletoe). • Reserve contains 70 different plant species reflecting the landscape prior to grazing/cropping. • Continue to maintain and conserve reserve by ensuring the trail alignment is clear for all users. 	

24. Scouts Hall



Map Reference	24
Facility Scale	Local
Owner	Scouts Australia
Key User: Cootamundra Scouts Group	
Key Facilities	
- Scout Hall	
Facility Condition	Satisfactory
Facility Usage	Low
General Notes: <ul style="list-style-type: none"> • Scout Hall opened in 1959. • Cubs meet Mon nights • Scouts meet Wed nights 	

02 Facilities Audit Cootamundra

Facilities Audit

25. Gyms



Map Reference	25
Facility Scale	Local
Owner	Private
Manager	Private
Key Facilities	
- Private Gyms	
Facility Condition	-
Facility Usage	-
General Notes: <ul style="list-style-type: none"> • Private Gyms (i.e. Ripped 247 and Come Alive Fitness Centre) offer fitness classes and free weights. 	

26. Men's Shed



Map Reference	26
Facility Scale	Local
Owner	CGRC
Manager	Cootamundra Men's Shed Inc
Key Facilities	
- Shed / Workshop with Associated Amenities.	
Facility Condition	Satisfactory
Facility Usage	Moderate
General Notes: <ul style="list-style-type: none"> • Accessed off Sutton St • Tue, Wed and Thur 9-12 • Venue for Men's Health Information (Men's Health Week 2019). • Makers of the Bird Walk Sculptures. • Vision to build a bigger shed. 	

27. Drag Strip



Map Reference	27
Facility Scale	Local
Owner	CGRC
Manager	Cootamundra Airport
Key Facilities	
- Starting pad surface on the current runway at the aerodrome.	
Facility Condition	Satisfactory
Facility Usage	Moderate
General Notes: <ul style="list-style-type: none"> • The new surface is the same product used in other motorsport tracks such as Mt Panorama in Bathurst. • The higher quality section of the first 70m will enable better traction for high powered vehicles. • Drag racing events are of great financial benefit to Cootamundra. • Each event can bring between 60-100 cars. 	

02 Facilities Audit Cootamundra

28. Dog Park



Map Reference	28
Facility Scale	Local
Owner	CGRC
Key User:	Dog owners
Cootamundra All Breeds Kennel Club Inc	
Key Facilities	
- Designated off-leash dog park with associated facilities (i.e seating, water fountain)	
Facility Condition	Satisfactory
Facility Usage	Moderate
General Notes: <ul style="list-style-type: none"> • Located on Hurley St in Apex Park • Designated off-leash dog park opened in 2014. • Progressive upgrades (i.e. irrigation) 	

29. Cameron Square



Map Reference	29
Facility Scale	Local
Owner	CGRC
Key User	Community
Key Facilities: - Cricket Nets, Playspace & associated facilities	
Facility Condition	Satisfactory
Facility Usage	Low
General Notes: <ul style="list-style-type: none"> • Located between Harley Ave & Wall Ave • The Square consists of playground, shelter, table & chairs • Cricket nets are in poor condition • Provides outdoor play opportunities for children and an unstructured recreational space for the local community. 	

30. Harolds Conkey Park



Map Reference	30
Facility Scale	Local
Owner	CGRC
Key User	Community
Key Facilities: - Playspace & associated facilities	
Facility Condition	Satisfactory
Facility Usage	Low
General Notes: <ul style="list-style-type: none"> • Located on Pinkstone Ave • The park consists of x2 shelters, playground equipment & security lighting. • A footpath runs through the park to link Harold Conkey Ave to Pinkstone Ave. • Provides outdoor play opportunities for children and an unstructured recreational space for the local community. 	

02 Facilities Audit

Cootamundra

Facilities Audit

31. Kingston Park



Map Reference	31
Facility Scale	Local
Owner	CGRC
Key User	Community
Key Facilities	
- Playspace & associated facilities	
Facility Condition	Satisfactory
Facility Usage	Moderate
General Notes: <ul style="list-style-type: none"> • Located on Gundagai Rd near Warren St • The park consists of public toilet, x3 table chairs & playground equipment. • Offers travelers/visitors rest stop facilities. • Provides outdoor play opportunities for children and an unstructured recreational space for the community. 	

05 Appendix

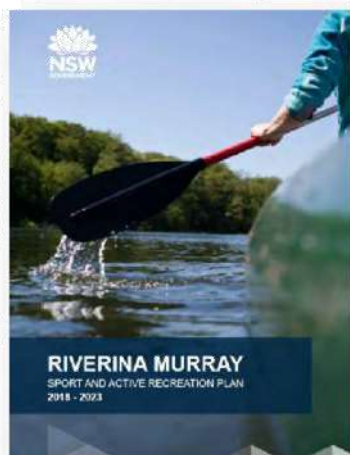
Appendix 2: Strategic Document Review

DRAFT

05 Appendix

Strategic Documents

Riverina Murray Sport and Active Recreation Plan 2018-2023



The Riverina Murray Sport and Active Recreation Plan sets out the vision for the region:

Riverina Murray Communities Working Together to Increase Participation in Sport and Recreation for All Through High Quality Programs and Facilities.

Six outcomes were identified for the Riverina Murray region:



In order to achieve these outcomes, the following strategies have been suggested:

Increased Participation

- 1.1 Increase promotion of sport and active recreation
- 1.2 Establish "Come and try" opportunities
- 1.3 Develop a Regional Sports Pass
- 1.4 Promote Active Kids Programs
- 1.5 Plan for and promote child safe and child friendly environments
- 1.6 Support Councils to include and strengthen reference to sport and active recreation in their Community Strategic Plans (CSP's)
- 1.7 Support State Sporting Organisations (SSOs) to develop a regional participation strategy
- 1.8 Attract and retain new volunteers

Improved Access

- 2.1 Improve coordination with schools
- 2.2 Develop a mobile phone application to foster sport and active recreation participation
- 2.3 Alter traditional format of sports to improve access for all participants
- 2.4 Improve education and training for different roles in the sport and active recreation sector
- 2.5 Explore options for shared transport to sport and active recreation opportunities
- 2.6 Provide support to under-represented groups to access sport and active recreation opportunities
- 2.7 Develop a central information hub /clearinghouse / database /portal for all sporting organisations and participants
- 2.8 Support sport and active recreation clubs to attract new participants
- 2.9 Focus on people not currently participating in any form of sport and active recreation
- 2.10 Enhance and promote Borambola Sport and Recreation Centre as a place for children and adults to experience sport and active recreation activities

05 Appendix

Integrated Performance Pathways

- 3.1 Establish a Centre of Excellence
- 3.2 Refocus school sport and active recreation
- 3.3 Strengthen links between the Southern Sports Academy and other sector partners
- 3.4 Embed the Foundation, Talent, Elite and Mastery (FTEM) pathway model in the region
- 3.5 Develop Borambola Sport and Recreation Centre
- 3.6 Improve coaching and officiating standards in the Riverina Murray

Fit for Purpose Facilities

- 4.1 Establish Regional Sporting Hub in Wagga Wagga and explore locations for regional sub-hubs
- 4.2 Maintain and enhance regionally significant sports facilities
- 4.3 Develop a strategic infrastructure plan
- 4.4 Plan and create passive and active recreation places
- 4.5 Plan for female friendly sporting facilities
- 4.6 Gain access to school facilities
- 4.7 Modernise and Optimise Borambola Sport and Recreation Centre

Valued Regional Events

- 5.1 Develop a unified sport and active recreation major event calendar
- 5.2 Maintain and enhance existing successful sporting events
- 5.3 Work with key stakeholders on events activation and legacy planning

Effective Collaboration

- 6.1 Establish a Riverina Murray Sport Forum
- 6.2 Develop a communication software tool
- 6.3 Explore insurance arrangements for sport participation

Her Sport Her Way, Shaping the Future of Women's Sport in NSW



The Office of Sport has designed a series of initiatives across four strategic pillars, Participation, Places and Spaces, Leveraging Investment and Leadership. We've applied the 'Her Sport Her Way' lens to each pillar to achieve the vision of enabling women and girls to be valued, recognised and have equal choices and opportunities to lead and participate in sport in NSW.

It will focus across four pillars

Participation - Increase the number of women and girls playing sport

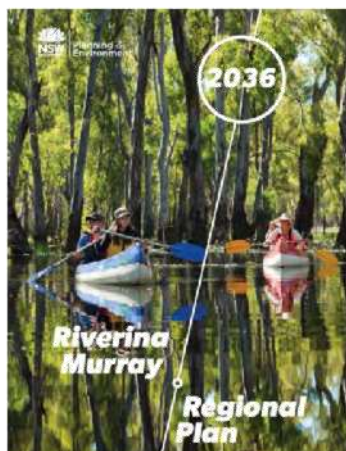
Places and Spaces - Lead, guide, inform and invest in the provision of sport facilities that support women and girls

Leverage Investment - Maximise investment in women's sport across the sporting sector, corporate sector, media, social media and government

Leadership - Support the sector to increase the number of women in leadership positions on and off the field, and develop inclusive sporting cultures

05 Appendix

Riverina Murray Regional Plan 2036



The *Riverina Murray Regional Plan 2036* establishes a framework to grow the region's cities and local centres, supports the protection of high-value environmental assets and makes developing a strong, diverse and competitive economy central to building prosperity and resilience in the region.

The Riverina Murray's strategic location is a major competitive advantage and critical to growing a diverse economy and building a strong network of centres.

The priorities for Cootamundra-Gundagai outlined in the report centre around:

- Supporting agriculture & the development of key freight services
- Develop niche value-added agricultural produce and related tourism opportunities
- Capitalise on the existing access to rail and road infrastructure
- Enhance access to services and facilities, including health and aged care, to support a healthy rural community

Riverina Murray Destination Management Plan 2018



A set of nine Strategic Development Themes were developed to respond to the issues and opportunities for the region. The themes most relevant to the Recreation Needs Study are:

Theme 2: Nature-Based Tourism

Utilise the region's natural assets to develop nature-based and recreational tourism experiences.

Theme 3: Rivers and Waterways

Improve visitor access and experience to major rivers and lakes to increase water-based activities

Theme 6: Sport and Recreation

Unlock the strong sporting culture and infrastructure of the region to develop recreational experiences and attract major sporting events and carnivals.

Theme 9: Infrastructure and Servicing

Ensure that investment in key infrastructure and visitor servicing keeps pace with visitor growth and expectations, including online marketing.

Projects aligned to these themes include:

Theme 2: Nature-Based Tourism

- Investment in park infrastructure such as roads, picnic areas, camping site and toilets
- Investment in trails, including walking and cycling trails

05 Appendix

Theme 3: Rivers and Waterways

- Riverfront precinct masterplans
- Riverfront parkland enhancements
- Other water-based experiences

Theme 6: Sport and Recreation

- Investment in supporting golfing infrastructure such as club house, food and beverage and accommodation
- Investment in sports and recreation facilities
- Investment in sports clubs
- Capacity building in event managers/regional competitions to host/run major competitions

Theme 9: Infrastructure and Servicing

- Township gateway improvements
- Township streetscape improvement and beautification
- Visitor Information and Servicing

The tier two projects that are nominated for the Cootamundra-Gundagai Council within the Management Plan that are relevant to the study are the:

1. Gundagai Rail Trail

Feasibility Study completed in 2008 and a funding application has been submitted for detailed development plan including costing to develop the section within the town limits as a phase 1, incorporating the State Heritage Listed Gundagai Railway Viaduct

2. South Gundagai Café and Canoe Hire

Temporary cafe/canoe hire at South Gundagai in warmer months to provide a new nature-based product and capture visitors along the Hume Highway.

Economic Development Strategy 2017



The strategy highlights five strategic initiatives to support economic development within the region

1. Grow the economy through existing and new business
 2. Marketing and promotion as a great place to live and invest
 3. Product development to become a "destination"
 4. Drive agricultural enterprises
- Work with partners to encourage economic infrastructure investment

The region is in proximity to many locations supporting popular recreational pursuits such as the Murrumbidgee River, Burrinjuck and Blowering Dams and the Snowy Mountains snowfields.

Listed as one of the regions comparative advantages is the:

- Access to excellent recreational facilities including golf, bowling, sporting fields and pools
- Excellent cultural and recreational opportunities for adults, youth and children (including Arts Centre, creative and sporting groups)
- Active volunteers and an engaged community
- Significant natural beauty (including the Murrumbidgee River) with great amenity
- Good proximity to popular places associated with recreational pursuits (snowfields, dams etc)

05 Appendix

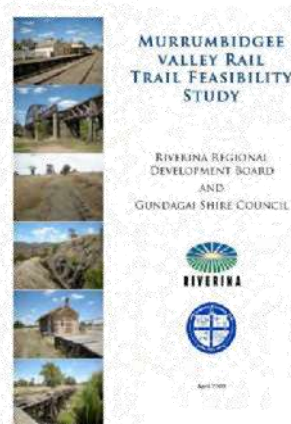
Several barriers are present in the region:

- Village utility infrastructure (i.e. reticulated water)
- Government funding to support infrastructure development is hard to access
- Small mixed lot farms have been subsumed into large scale operations reducing employment and population, especially in outlying villages
- Heavy reliance on Council to advocate and support initiatives – these may not get sufficient support from private businesses
- Communities can be change averse and resist approaching issues innovatively and creatively

The Economic Development Strategy states that consideration should be given to product development related to:

- Natural resources: River, proximity to snow, dams
- Related recreational activities: Adventure tourism, water-based recreation, cycling
- History and stories: the flooding of the original town and the role of the indigenous community in this event, Captain Moonlite, Dog on the Tuckerbox
- Historical assets: timber bridges, statues and memorials

Murrumbidgee Valley Rail Trail Feasibility Study (2009)



The *Murrumbidgee Valley Rail Trail Feasibility Study* was commissioned by the Riverina Regional Development Board, in partnership with the Gundagai Shire Council to establish whether developing a multi-use recreation trail along a disused railway corridor between Coolac and Tumblong, through Gundagai was a worthwhile proposition.

The Coolac to Tumblong corridor is approximately 32 kms and has 10 timber bridges ranging in size from 3 metres to over 920 metres.

The benefits gained by the development of a recreational trail along the former railway include economic, health & environmental benefits, along with improved fire management.

Of strategic importance to the recreation needs study it is noted that the development of the rail-trail appears a very worthwhile proposition. The cost of developing a trail along the Coolac to Tumblong railway corridor has been estimated at \$3.33 million (plus GST) 10 years ago.

The study has noted 10 conditions upon which the rail-trail conversion should proceed & providing these conditions are accepted the staged conversion of the railway corridor between Coolac and Tumblong to a multi-use recreation trail is feasible.

05 Appendix

Cootamundra Gundagai Regional Council Tourism and Economic Development Strategy March 2019



The three strategic focus areas for tourism and economic growth and sustainability are:

- Improving liveability
- Supporting local businesses
- Managing planning issues
- Developing the visitor economy
- Branding and marketing

A priority action plan to implement the tourism and economic development strategy recommended 20 actions. The actions relevant to sport and recreation included;

- Masterplan access to the Murrumbidgee River and be shovel ready to seek funding assistance to action the capital improvements
- Develop promotional campaigns highlighting sport related activities and facilities
- Implement the Villages Strategy recommendations (Developing trails for canola, rail (inclusion in the Eastern Riverina Rail Trails Alliance), art (Coolac, Muttama & Nangus), trail (Coolac-Gundagai-Tumblong), walking and riding trails

Cootamundra-Gundagai Regional Council Fees and Charges 2018-19



The Council fees and charges associated with the recreation and sport fields, parks & facilities are outlined in the 2018-19 *Fees and Charges* document.

Sporting fields, parks and sports stadium fees are often associated primarily with a club (i.e. Clarke Oval is the base for the Australian Rules Football Club) and as such charges this user an annual fee. This fee varies depending on the venue and the club associated with the site. Several venues also have a fee for casual usage.

The sports stadium is available for casual court hire, Council organised sport, school groups and non-sporting groups. A Council program costs a minimum fee of \$5 per person, casual court hire \$40, school groups \$4 and non-sporting use \$70.

The swimming pool prices are set

- Cootamundra annual prices for adults \$250, children & pensioners \$200, family \$700
- Gundagai season passes adults \$113, children & pensioners \$93, family \$227

Cootamundra Town Hall has set rates for hiring with charitable organisations eligible to apply for a donation from Council of up to 50% off. The village halls of Muttama, Stockinbingal and Wallendbeen have the fees set by the local committee.

Fees for major events are determined by a quorum of the Cootamundra Sporting Groups Advisory Committee

05 Appendix

Gundagai Rail Trail – Trail Development Plan Draft Report (2018)



The *Trail Development Plan* sets out a detailed set of activities for the progressive construction of a trail on the disused railway corridor within the “town” section of Gundagai (from Ann St in the north to Gocup Road in the south).

The estimated detailed cost of the project is \$1,282,560. The scope of work excluded assessment of the viaduct bridge over the Murrumbidgee River. This *Trail Development Plan* states that if the bridge is not able to be restored, the existing footpath network can be used for the rail trail, however the present bridge crossing is not ideal.

A subsequent study *Gundagai Railway Bridge and Viaducts – Conversion to Rail Trail Feasibility Report 2018* was commissioned by the Cootamundra-Gundagai Regional Council to investigate the feasibility of incorporating Gundagai Railway Bridge and Viaducts into a possible future rail trail.

The overall indicative cost estimate to rehabilitate the timber viaducts and install shared path decking system across the entire Gundagai viaducts and bridge spans is \$19,615,000 which includes a contingency of 40%.

05 Appendix

Peak Bodies

Partnerships with sport and recreation peak bodies will be important in the implementation of this Plan. The strategic direction of these organisations can have direct and indirect influences on sport and recreation facilities, clubs and programs. For example, future state or regional restructures of competition leagues can influence opportunities relating to a sport within the Cootamundra-Gundagai region

Peak body strategic documents include:

- *AFL Preferred Facility Guidelines State, Regional, Local, School and Remote Facilities (2019)*
- *Australian Professional Rodeo Association*
- *Australian Rugby Strategic Plan 2016-2020*
- *Baseball Australia Strategic Plan*
- *Basketball NSW Strategic Plan 2016-2020*
- *Confederation of Australian Motor Sports (CAMS) Strategic Plan 2017-2019*
- *Cricket NSW Strategy 2017-2022*
- *Mountain Bike Australia Strategic Plan 2016-2021*
- *Netball in NSW – Statewide Facilities Strategy (2018-2033)*
- *NRL Strategic Plan 2018-2022*
- *Pony Club NSW 2018 Annual Report*
- *Reframing the Future 2017-2020 Athletics in New South Wales (OneSport)*
- *Swimming NSW Strategic Plan*
- *Tennis NSW Strategic Plan 2018-21*
- *The NSWTA Strategic Plan 2015-2020, NSW Touch Football*
- *We Are Football, This is Our Vision, Whole of Football Plan*



MOUNTAIN BIKE AUSTRALIA

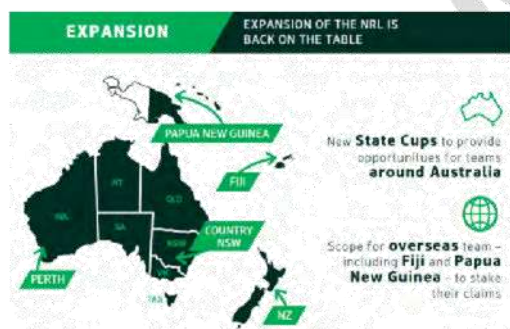


05 Appendix

NRL Strategic Plan 2018-2022

The *NRL Strategic Plan* has three key words UNITE / EXCITE / INSPIRE and notes three key focus areas:

- Grassroots (more funding)
- Expansion (Country NSW)
- Women's Game (fastest growing part)



2016-2020 Australian Rugby Strategic Plan

The four key areas within the plan are:

1. Make Rugby a Game For All
2. Ignite Australia's Passion for the Game
3. Build Sustainable Elite Success
4. Create Excellence in How the Game is Run

Detailed under *A Game For All*, it is stated that Club Rugby is at the heart of Australian Rugby and that the traditional make XV's game in Rugby heartlands will be insufficient to grown clubs and participants. The target is to build a more diverse participant base by introducing new forms of the game. These formats need to reach into the network of clubs to reinvigorate their playing base, help them become more sustainable and use their infrastructure 12 months a year instead of 6.



05 Appendix

We Are Football, This is Our Vision, Whole of Football Plan

The Whole of Football, a vision for Football in 2035 and has set future targets for the sport. The targets most relevant to the Recreation Needs Study are outlined below.

Football Community

- Meet the needs of participants who want to enjoy Football "Anytime, Anyhow, Anywhere"
- Welcome newly arrived residents or people who develop a newfound affinity for Football
- Invest in the Grassroots. Football must redistribute resources to focus on improving participant experience and providing pathways for our best players
- Recognise our stars. Not only players on the pitch, but the people who make everything possible, volunteers, coaches and referees

Participation

- Having a girls' team in every club, then work towards a girls' and women's team in every age group within each club
- Futsal will be a key component of the growth in social football. Futsal's small sided, dynamic & flexible format means it can be efficiently delivered to Australia's more remote areas

Coaching

- Coaching will be measured by a coach's ability to help a player enjoy Football and fulfil their potential at whatever level that may be

Facilities

- Every Member Federation in Australia must have a Home of Football to support Football in that region that acts as a community hub and supports the development of elite players

The NSWTA Strategic Plan 2015-2020, NSW Touch Football

The NSW Strategic Plan 2015/2020 sets some ambitious targets for the sport and sets four pillars of "A Clear 2020 Vision".

- Corporate Leadership
- Operational Services
- Sports Management
- Sport Development

The strategies most relevant to the Recreation Needs Study are outlined below.

Sport Management

- 2A. Create relationships with non-direct competitors (netball, rugby league, events such as Tough Mudder/Colour run etc)
- 2B. Create Government Agency relationships for the benefit of State and Affiliate development (actively engage with local authorities)
- 2D. Substantially grow participation of affiliated members of NSWTA by 5% by 2020.
- 2G. Place value on human resource at both professional and volunteer level

Sport Development

- 3A. Provide a quality experience for recreational participants through innovative processes geared at ease of participation.
- 3D. Forge key relationships and programs with Schools/ Universities/ Educational providers

Operational Services

- 4J. Aid in the development of local facilities for the benefit and enjoyment of grass root members

05 Appendix

AFL Preferred Facility Guidelines State, Regional, Local, School and Remote Facilities (2019)

The Guidelines outline the preferred facility requirements for State League, Regional and Local level facilities.

The 2019 edition recognises the changing trends in the facility space. These trends include:

- The growth in female participation and the subsequent need to address amenity provision and provide welcoming, inclusive club environments
- Innovation in facility and ground surface design
- The need to access an increasing number of venues to address ground capacity issues

The guidelines recommend classifying facilities against the Community Facility Hierarchy Model.

Hierarchy Level	Represent % of Venues Nationally
State	3%
Regional	5%
Local	76%
Remote	1%

76% of all community venues fall within the local category or classification. They are designed to cater for local level competition within individual suburbs, townships, or municipalities and are usually also the 'home' of a seasonal club. Facilities and playing surfaces are provided to home and away competition standard only. However, local leagues should aspire to get local facilities used for finals to regional level standards.

Cricket NSW Strategy 2017-2022

The Cricket NSW Strategy is represented graphically in the diagram below. The vision is 'Australia's Favourite Sport – a sport for all Australians)

Cricket NSW will support their strategy by delivering the facilities, we need at all levels, attracting and developing great people. They are also aiming to be the leading sport for women and girls.



Strategy Plan Basketball NSW 2016-2020

The plan identifies Strategic Pillars of Leadership; Culture & Inclusion; Competition, Elite Pathways; Innovation; Participation; Facilities; Awareness.

Key strategies are listed under each pillar

Participation - to increase participation at all levels of the game working pro-actively and collaboratively with our community. This includes supporting 5x5, reaching into schools, adopting a new format of 3x3.

Facilities – increase the number of facilities and basketball courts available to play basketball in the areas where we can quantify and support the growth of the sport.

High priority hub areas in Regional – Dubbo, Wagga, Illawarra, North East and Newcastle.

05 Appendix

Netball in NSW – Statewide Facilities Strategy (2018-2033)

The Netball in NSW Statewide Facilities Strategy contains recommendations for the 15-year period from 2018 to 2033. It notes a benchmark of 1 court per 3,500 population.

The strategies most relevant to the Recreation Needs Study are outlined below.

- 1.1 Associations should increase the utilisation rate of their current and future netball facilities to provide increased access to training and competition opportunities for all current and future players, coaches and umpires; and to encourage participation growth (i.e. changing programming schedules – other days than Saturday)
- 4.1 Netball NSW to encourage all Association, Clubs and other deliverers of netball are referring to, abiding by, all requirements within the most current version of the Netball Australia National Facilities Policy, when any current court is being upgraded and when any new court is being developed, be it indoor, outdoor, single use, or multi use
- 4.2 Netball NSW to encourage all Association, Clubs and other deliverers of netball to include FAST5 court markings on their facility's courts when any court is being resurfaced/ marked, and when any new court is being developed
- 4.7 NNSW to work with the relevant NNSW Associations and all other relevant parties to prioritise the development / enhancement of netball facilities, in-line with the State Government's Regional Multi-Sport Facilities Hubs initiative. The following locations have been identified by State Government as potential Regional Multi-Sport Facilities Hub locations: Tamworth, Wagga Wagga, Bathurst, Coffs Harbour, Dubbo, Lismore, Jindabyne

Reframing the Future 2017-2020 Athletics in NSW (OneSport)

Reframing the Future 2017-2020 provides the platform from which all partners in the Athletics Movement can work together as a united collective, to drive the growth and capacity of the sport in NSW (i.e. LANSW, ANSW, NSW Masters Athletics and others).

The strategic priorities are:

More People in NSW Participating in Athletics

- We want more people, of all ages, backgrounds and abilities, participating and competing in all forms of Athletics in NSW and more often

Enabling Our People

- We will ensure the growth and development of the Athletics workforce in NSW

Leading the Way

- We will work collaboratively and innovatively to build an industry-leading sports community in NSW

Swimming NSW Strategic Plan 2015-2018

Swimming NSW's Strategic plan acknowledges that swimming is Australia's highest participation sport and is an activity synonymous with the Australian way of life.

The current objectives published on the Swimming NSW website

<https://nsw.swimming.org.au/about-us-nsw> relevant to this study are:

- To promote, to teach and to encourage the art of swimming
- To stimulate public opinion in favour of providing proper accommodation and facilities for acquiring the art of swimming

05 Appendix

Australian Mountain Bike Trail Guidelines

Trails are like any other asset or facility development and as such, are subject to a formal planning and approval process. The trail development process is an eight-stage process.

1. Proposal
2. Framework
3. Site Assessment
4. Concept Planning
5. Corridor Evaluation
6. Detailed Design
7. Construction
8. Management

Sustainable trails means developing the right trails, in the right places, the right way and for the right reasons.

The guidelines comprehensively cover general trail planning design and construction principles such as trail hierarchy and models, sustainability, technical features, trail difficulty rating systems and signage.

The trail difficulty rating system (TDRS) outlined below provides 7 levels of difficulties ranging from very easy to extreme. These trail descriptors should be used at trail signage, on brochures and maps.

Table 10: Mountain bike TDRS short descriptions

Difficulty Symbol	Short Description
	Very easy Wide trail with a gentle gradient, smooth surface and no obstacles. Suitable for beginner cyclists with basic bike skills, and most bikes.
	Easy Wide trail with a gentle gradient, smooth surface, some obstacles such as roots, logs and rocks. Suitable for beginner cyclists with basic, mountain bike skills, and off-road bikes.
	Easy with Intermediate Sections Likely to be single track with a moderate gradient, variable surface and some obstacles. Rougher tracks with roots, logs and rocks. Suitable for intermediate cyclists with mountain bikes.
	Intermediate Single track with moderate gradient, variable surface and obstacles. May include steep sections. Suitable for skilled recreational bikers with mountain bikes.
	Intermediate with Difficult Sections Suitable for competent mountain bikers, used to physically demanding routes. Includes large, dangerous and insurmountable obstacles and features. Challenging and variable with long steep climbs or descents and loose surfaces. Some sections will be unique to trails.
	Difficult Suitable for experienced mountain bikers, used to physically demanding routes. Includes long, dangerous and insurmountable obstacles and features. Challenging and variable with long steep climbs or descents and loose surfaces. Some sections will be unique to trails.
	Extreme Suitable for highly experienced mountain bikers, used to physically demanding routes. Includes long, dangerous and insurmountable obstacles and features. Challenging and variable with long steep climbs or descents and loose surfaces. Some sections will be unique to trails.

Tennis NSW Strategic Plan 2018-21

The state of play of tennis in NSW is considered in this report

1. Participation in tennis remains strong
2. The way we play is changing (Adult social play offers our largest opportunity for growth)
3. The places we play need to evolve
4. The power of coaches (only 49% of venues have a formal coach/club agreement)

Strategic Purpose:

- 1: To support clubs and coaches get more people participating in tennis

NEW INITIATIVES WE WILL DELIVER	
HOT SHOTS	<ul style="list-style-type: none"> ✓ Growing the number of Hot Shots venues ✓ Growing Hot Shots Matchplay venues ✓ Increased investment in Hot Shots marketing
SCHOOLS	<ul style="list-style-type: none"> ✓ Growing primary school partners ✓ Growing secondary school partners ✓ Increasing teacher training
COMPETITIVE TENNIS	<ul style="list-style-type: none"> ✓ Tennis Sydney governance review ✓ Supporting JDS administration ✓ Training more Tournament Directors
ADULT SOCIAL TENNIS	<ul style="list-style-type: none"> ✓ Promoting Adult Social Tennis benefits ✓ Supporting Adult Social Tennis pilots ✓ Assist Clubs to better market Adult Social Tennis

- 2: To assist our Clubs, Coaches and Councils to invest in and operate sustainable tennis venues

NEW INITIATIVES WE WILL DELIVER	
TENNIS INFRASTRUCTURE	<ul style="list-style-type: none"> ✓ Publish the Future Venues Strategy ✓ Increase number of ITT standard venues ✓ Develop strategic master plans in key regional hubs
CLUB OPERATIONAL HEALTH	<ul style="list-style-type: none"> ✓ Launch MyTennisStart ✓ Develop the Venue Sustainability Rating (VSR) ✓ Use VSR as means to engage Clubs & Councils on future needs of tennis
RAISE PROFILE OF TENNIS IN GOVT.	<ul style="list-style-type: none"> ✓ Strengthen relationships with State Government and Local Government Areas (LGA's) ✓ Better educate LGA's on the needs of tennis ✓ Influence a greater number of LGA leases
STATE TENNIS CENTRE	<ul style="list-style-type: none"> ✓ Invest in the upgrade of Sydney Olympic Park Tennis Centre ✓ Continue to lobby for a new Sydney Sports Arena ✓ Create a world-class high performance environment

05 Appendix

ABCRA Australian Bushmen's Campdraft and Rodeo Association

The Australian Bushmen's Campdraft and Rodeo Association (ABCRA) is a non-profit Campdraft and Rodeo organisation that was formed in 1946 for the purpose of co-ordinating and assisting affiliated committees to conduct their events.

The ABCRA affiliates the sports of Campdrafting, roughriding (saddlebronc, bareback, bull and steer riding) and timed rodeo events (steer wrestling, rope & tie, barrel race (ladies), steer undecorating (ladies), team roping, breakaway roping (ladies) and junior barrel race.

Although the typical competition is likely to have a direct association with the land, the increasing profile of rodeo and Campdrafting, now sees competitors from all walks of life. What will never change is the family appeal; both in spectating and competing, the ABCRA actively encourages novice and junior competitors in both rodeos and campdrafts.

Pony Club New South Wales 2018 Annual Report

Pony Club New South Wales encourages young people to ride and learn to enjoy all kinds of sport connected with horses and riding in a safe and supportive environment.

The Pony Club is facing the challenge of dwindling memberships numbers and is actively working to address this trend. The strengths & advantages of the organisation are listed as the volunteers who spend considerable time for the benefit of Pony Club, along with the substantial knowledge base of the membership.

Baseball Australia Strategic Plan

Performance Objectives:

- Aussie T-Ball – Grow baseball via a quality junior program
- Little League – Australian sport's leading community-based competition
- Australian Baseball League – Broadcast Asia-Pacific League
- Team Australia – Top 5 World Ranking
- Leadership and Development – Increase support to grassroots.

Confederation of Australian Motor Sport (CAMS) Strategic Plan 2017-2019

The CAMS Strategic Plan 2017-2019 will advance and grow motor sport for Australian participants at all levels as the trusted custodian, developer and facilitator or sustainable, safe and fair sport. There are four key elements

- Deliver sustainable financial growth
- Improve brand and reputation
- Grow participation and membership
- Align strategy, culture and performance

05 Appendix

Appendix 3: Funding Opportunities

DRAFT

**Purpose:**

As part of Sport NSW's commitment to advocating for and strengthening the sports sector - grants information and updates are a regular feature of the fortnightly Blues eNews newsletter. [Join our network and subscribe to Blues eNews](#)

The full Sport NSW Grants Schedule Summary document is regularly updated and details available grants with the view to making this information easily accessible and in one place.

Sport NSW encourages our member State Sporting Organisations, State Sporting Organisations with a Disability and Local Councils to regularly share this information with their stakeholders, for the benefit of all sporting clubs and associations across the state. [Bookmark the Sport NSW Grants page and check back regularly for updates](#)

When looking for available grants in your area, we also encourage you to get in contact with your **Local Council**.

The Australian Sports Foundation can assist you as an individual or club representative to fundraise for anything that helps develop sport! Click here to visit their page: <https://asf.org.au/>

Key:

Grant OPEN or UPCOMING at time of update

Grant not currently available

Contents:

- | | |
|--|---|
| → Facilities / Building / Infrastructure | → Technology |
| → Programs / Events | → Defibrillator Program |
| → Volunteers | → Social Cohesion / Multicultural NSW |
| → Women and Girls Programs | → Age Specific |
| → Inclusion | → Individuals / Scholarships |
| → Capacity Building | → Sport Specific |
| | → Competitions and Raffles |

Do you have details of a grant that we have missed?

Please forward the information and link to applications to info@sportnsw.com.au

Grant OPEN or UPCOMING at time of update

Grant not currently available

Document updated – 9 August 2019

Facilities / Building Grants

Regional Growth Fund Eligibility - <https://www.nsw.gov.au/improving-nsw/regional-growth-fund-eligibility/>
Browse the list of local government areas or enter your postcode below to check which funds are available in your area.

Community Building Partnership Program
Purpose The program awards grants for community infrastructure projects that: <ul style="list-style-type: none"> • Deliver positive social, environmental and recreational outcomes • Promote community participation, inclusion and cohesion
Who can apply? <ul style="list-style-type: none"> • Local councils (required to match funding in the form of cash) • Incorporated not-for-profit organisations (not required to match funding but will be looked upon favourably)
How much? \$300,000 available to fund projects in each state electorate of NSW. (Whilst there is no upper grant limit, the average is usually around \$20,000)
When is it open? 2019 dates now available but not yet open <ul style="list-style-type: none"> • Applications Open: Monday 2 September 2019 – 9am • Applications Close: Friday 27 September 2019 – 5pm • Announcement of successful projects and advice to all applicants Late March 2020 • Projects to be completed by 31 October 2021
Administered by: NSW Government (Department of Premier and Cabinet)
Further Information https://www.nsw.gov.au/improving-nsw/projects-and-initiatives/community-building-partnership/

Stronger Country Communities Fund
Purpose To invest in infrastructure projects in regional NSW communities to improve the lives of residents and enhance the attractiveness of these areas as vibrant places to live and work.
Who can apply <ul style="list-style-type: none"> • Applications can only be submitted by Councils in regional NSW.
How much? Round Three will provide an additional \$100 million for community projects in regional NSW, with at least \$50 million for youth-related projects.
When is it open? <ul style="list-style-type: none"> • Applications open Monday 1 July 2019 • Applications close Friday 27 September 2019
Administered by: NSW Government
Further Information https://www.nsw.gov.au/improving-nsw/regional-nsw/regional-growth-fund/stronger-country-communities/

Grant OPEN or UPCOMING at time of update

Grant not currently available

Document updated – 9 August 2019

Greater Sydney Sports Facility Fund
Purpose To ensure funding is allocated to those sporting facilities that deliver the best outcomes for the communities they support. <ul style="list-style-type: none"> • Increase the number and type of sport facilities • Improve the standard of existing sport facilities • Increase participation in sport
Who can apply? Funding is available for projects in all Greater Sydney local government areas, from eligible applicants: <ul style="list-style-type: none"> • 33 local government authorities in Greater Sydney • NSW state sporting organisations or the National sporting organisation where the state body is part of a unitary governance model • Incorporated, community-based, not-for-profit sporting organisations and organisations providing sport and recreation programs that benefit the community, such as PCYCs, YMCA and YWCA • Educational organisations (such as schools, TAFEs and universities) in conjunction with local councils and local or state sporting entities • Private enterprises.
How much? An allocation of \$100 million is available over three years for sport facility projects. Funding for individual projects: <ul style="list-style-type: none"> • up to \$5 million for sport facility projects. • For projects more than \$1 million a 25 % co-contribution of the grant amount requested will be required.
When is it open? <ul style="list-style-type: none"> • Round 2 of the fund opened 1 July 2019 • Applications close 20 September 2019 at 5pm
Administered by: NSW Government (Office of Sport)
Further Information https://sport.nsw.gov.au/clubs/grants/greater-sydney-sports-facility-fund

Regional Growth – Environment and Tourism Fund
Purpose To increase tourist visitation by investing in regional environment and tourism infrastructure, particularly focusing on assets that will grow and further diversify NSW regional economies.
Who can apply? <ul style="list-style-type: none"> • Local and state government agencies • Aboriginal Land Councils and other Aboriginal groups • Community groups registered as incorporated associations • Non-government organisations.
How much? \$500,000+ (with a pool of \$100 million available) <ul style="list-style-type: none"> • Stream Two: Up to \$50 million for projects from eligible applicants who were unsuccessful at EO1 stage during Round One.
When is it open? Opened 14 August 2018 Closes midnight on Friday 11 January 2019.
Administered by: NSW Government
Further Information https://www.nsw.gov.au/improving-nsw/regional-nsw/regional-growth-environment-and-tourism-fund/

Grant OPEN or UPCOMING at time of update

Grant not currently available

Document updated – 9 August 2019

Regional Sports Infrastructure Fund
Purpose Increase number / type of regional sporting facilities, Improve standard of existing regional sporting facilities, and Increase participation opportunities in sport
Who can apply? <ul style="list-style-type: none"> Local government authorities State Sporting Organisations Incorporated, community based and not-for-profit sporting organisations (clubs or district associations) Educational organisations (ie schools, TAFEs and universities) in conjunction with local councils and local or state sporting entities Private enterprises
How much? Targets investment between \$1 million and \$10 million for regional sports hubs or regionally significant sport facilities.
When is it open? <ul style="list-style-type: none"> Applications open 15 March 2018 Applications close 4 May 2018
Administered by: NSW Government (Office of Sport)
Further Information https://sport.nsw.gov.au/clubs/grants/regional-sports-infrastructure

ClubGRANTS Category 3 Fund – Infrastructure Grants
Purpose To support the building, renovation and fit out of infrastructure to communities across NSW. Funding is available for sport and recreation, arts and cultural and emergency preparedness projects. Funding can be used toward the costs of construction, alteration, renovation, fit out of infrastructure and the purchase of mobile infrastructure in the across: Indoor organised sports centres, Leisure centres, Outdoor organised sport facilities, Recreation spaces, Large-scale purpose-built facilities and Water sports.
Who can apply? / Eligibility <ul style="list-style-type: none"> Location – built infrastructure based in NSW Applicant – organisation with an ABN that is responsible for operating / maintaining the infrastructure Benefit – accessible and available to the general public the majority of the time Purpose – Infrastructure related to Arts & Culture, Emergency Preparedness or Sport & Recreation Development status – works with Development Approval or written exemption Financial contribution – local government applicants are required to match funding amount requested
How much? Sport & Recreation Projects - \$100,000 to \$300,000
When is it open? For 2019/20, three grant rounds are available. The rounds will open on 5 August 2019, 18 November 2019 and 16 March 2020.
Administered by: NSW Government (Office of Responsible Gambling)
Further Information https://www.responsiblegambling.nsw.gov.au/infrastructure-grants/infrastructure-grants

Grant OPEN or UPCOMING at time of update

Grant not currently available

Document updated – 9 August 2019

Everyone Can Play in NSW
Purpose - focused on funding inclusive playspace delivery across NSW by partnering with Councils to design and construct new and upgrade playspaces in line with the Everyone Can Play in NSW inclusive playspace guideline.
Who can apply? The grant is open to all NSW Councils.
How much? \$4 million in funding will be available to Councils across NSW for the following projects <ul style="list-style-type: none"> • Inclusive Playspace – Upgrades (up to \$50,000 per project) • Inclusive Playspace – New (up to \$200,000 per project)
When is it open? <ul style="list-style-type: none"> • Applications Open: November 2018 • Applications Close: 3pm (AEST) Friday, 21 December 2018. • Independent panel assessment and announcement of successful projects January/February 2019 • Deed of Agreements signed and projects commence March 2019 onwards
Administered by: NSW Government (Planning and Environment)
Further Information https://www.planning.nsw.gov.au/Policy-and-Legislation/Open-space-and-parklands/Everyone-Can-Play-in-NSW/Everyone-Can-Play-in-NSW-grant

Community Sport Infrastructure Scheme
Purpose To improve local community sport infrastructure which will support greater community participation in sport and physical activity and/or offer safer and more inclusive community sporting hubs.
Who can apply? <ul style="list-style-type: none"> • A sporting organisation, such as a community sports club or registered sport association; • A local government entity; • An education institution in an outer regional, remote, or very remote location, and only if community sport infrastructure exists on land owned or managed by the institution's council/board of management; • A not-for-profit (NFP) organisation whose NFP status must be demonstrated Please refer to Section 5 of the Program Guidelines for additional eligibility criteria.
How much? <ul style="list-style-type: none"> • Stream 1 up to \$50,000 • Stream 2 \$50,001 to \$200,000 • Stream 3 \$200,001 to \$500,000
When is it open? Grant open: 2 August 2018 Grant close: 14 September 2018 Announcement Period: December 2018 onwards
Administered by: Sport Australia
Further Information https://www.sportaus.gov.au/grants_and_funding/community_sport_infrastructure_grant_program

Grant OPEN or UPCOMING at time of update

Grant not currently available

Document updated – 9 August 2019

My Community Project
Purpose My Community Project is all about local ideas, local projects and local decisions. Projects must align with one or more of the following program categories: Accessible, Cultural, Healthy, Liveable, Revitalising or Safe communities.
Who can apply? Anyone can submit a project proposal, providing they: <ul style="list-style-type: none"> • request funding between \$20,000 and \$200,000 • are aged 16 years or older as of 15 May 2019 • have a residential address in the NSW state electorate where the project is to be delivered • have identified a sponsor who agrees to support and manage the delivery of the project if approved.
How much? <ul style="list-style-type: none"> • Grants between \$20,000 and \$200,000 are available.
When is it open? Applicants will be invited to submit their My Community Project applications from 9am, 2 April 2019 to 2pm, 15 May 2019.
Administered by: NSW Gov
Further Information https://www.nsw.gov.au/improving-nsw/projects-and-initiatives/my-community-project/

Building Better Regions Fund (BBRF) - Infrastructure Projects Stream
Purpose The \$641.6 million Building Better Regions Fund (BBRF) supports the Australian Government's commitment to create jobs, drive economic growth and build stronger regional communities into the future. The Infrastructure Projects Stream supports projects which involve the construction of new infrastructure, or the upgrade or extension of existing infrastructure that provide economic and social benefits to regional and remote areas.
Who can apply? At a minimum, you must have an Australian Business Number (ABN) and be one of the following incorporated entities: <ul style="list-style-type: none"> • an incorporated not for profit organisation. • an Australian local government agency or body as defined in appendix A of the grant opportunity guidelines • non-distributing co-operatives.
How much? up to 50 per cent or up to 75 per cent of your eligible project costs - between \$20,000 to \$10 million
When is it open? 27 Sept 2018 – 15 November 2018
Administered by: Department of Industry, Innovation and Science
Further Information https://www.business.gov.au/Assistance/Building-Better-Regions-Fund/Building-Better-Regions-Fund-Infrastructure-Projects

Grant OPEN or UPCOMING at time of update

Grant not currently available

Document updated – 9 August 2019

Building Better Regions Fund (BBRF)- Community Investments Stream
Purpose The \$641.6 million Building Better Regions Fund (BBRF) supports the Australian Government's commitment to create jobs, drive economic growth and build stronger regional communities into the future. The Community Investments Stream funds the following community activities, new or expanded local events, strategic regional plans, and leadership and capability strengthening activities. These projects will deliver economic and social benefits to regional and remote communities.
Who can apply? At a minimum, you must have an Australian Business Number (ABN) and be one of the following incorporated entities: <ul style="list-style-type: none"> • an incorporated not for profit organisation. • an Australian local government agency or body as defined in appendix A of the grant opportunity guidelines • non-distributing co-operatives.
How much? between \$5,000 to \$10 million - the grant amount will usually be 50 per cent of eligible project costs. In some circumstances the grant may be up to 100 per cent. For small projects with a total project value of less than \$20,000, grant funding will be up to 100 per cent of eligible project costs.
When is it open? 27 Sept 2018 – 15 November 2018
Administered by: Department of Industry, Innovation and Science
Further Information https://www.business.gov.au/Assistance/Building-Better-Regions-Fund/Building-Better-Regions-Fund-Community-Investments

Stronger Communities Programme Round 4
Purpose The Stronger Communities Programme provides each of the 151 federal electorates with up to \$150,000 to fund small capital projects that improve local community participation and contribute to vibrant and viable communities.
Who can apply? In consultation with their community, each Federal Member of Parliament must identify potential applicants and projects in their electorate and invite them to apply for a grant. At a minimum you must: <ul style="list-style-type: none"> • an incorporated not for profit organisation • Local government agency or body • A trustee on behalf of a property trust with responsibility for a community asset
How much? \$2,500 to \$20,000 (with \$150,000 allocated per electorate in Australia and up to 50% of eligible project costs).
When is it open? Opened 5 August 2019 – Closing 10 October 2019
Administered by: NSW Government (Department of Industry, Innovation and Science)
Further Information https://www.business.gov.au/assistance/stronger-communities-programme

Grant OPEN or UPCOMING at time of update

Grant not currently available

Document updated – 9 August 2019

Resources for Regions
Purpose Delivers improved infrastructure and services to mining-related communities, as part of the NSW Government's \$1.3 billion Regional Growth Fund.
Who can apply? Applicants must be in a regional local government area which is mining-related. Applications can be accepted from the following entities: <ul style="list-style-type: none"> • Local councils • Joint Organisations of Councils (JOCs) or Regional Organisations of Councils (ROCs) • incorporated not-for-profit organisations. Partnerships between groups are encouraged.
How much? Up to \$50 million is available for the 2018-19 round of the Resources for Regions Fund. The minimum grant amount is \$1 million and there is no maximum grant amount. All projects must have a minimum financial co-contribution of 25 per cent of the total grant amount.
When is it open? <i>Expressions of interest open on 12 June 2018 and close on 23 July 2018</i>
Administered by: Department of Premier and Cabinet
Further Information https://www.nsw.gov.au/improving-nsw/regional-nsw/regional-growth-fund/resources-for-regions/

Restricted – by invitation only

Community Development Grants Programme
Purpose To support needed infrastructure that promotes stable, secure and viable local and regional economies.
Who can apply? <ul style="list-style-type: none"> • The Community Development Grants Programme is not a competitive grants programme. Only projects identified by the Australian Government will be considered for funding under the Community Development Grants Programme. ie. Australian Government selects projects to be invited to submit a request for information. • General applications by organisations for projects not identified by the Australian Government will not be accepted by the Department. • Funding proponents must be a legal entity and have an Australian Business Number (ABN) or an Australian Company Number (ACN) to receive funding under the programme.
How much? \$2,000 to \$35 million (includes multiple year projects – must be scheduled for completion before 30 June 2020).
When is it open? Ongoing
Administered by: NSW Government (Department of Infrastructure, Regional Development and Cities)
Further Information http://regional.gov.au/regional/programs/community-development-grants.aspx

Grant OPEN or UPCOMING at time of update

Grant not currently available

Document updated – 9 August 2019

Programs / Events

Move It AUS – Participation
<p>Purpose The Move It AUS - Participation Grant Program provides support to help organisations get Australians moving and to support the aspiration to make Australia the world's most active and healthy nation. If successful, applicants will receive grants up to \$1 million to implement community-based activities that align to the outcomes of Sport 2030.</p>
<p>Who can apply? To be eligible to apply for the Move It AUS - Participation Grant Program, applicants must be one of the following entity types and have been operating for 12 months or longer:</p> <p>Stream1</p> <ul style="list-style-type: none"> • Sporting Organisations (excluding National Sporting Organisations) • Non-Government Organisations (NGO)* including physical activity organisations**; and/or • Local Government Organisations. • The Australian Capital Territory does not have local government organisations therefore, ACT funded organisations are eligible to apply <p>Stream2</p> <ul style="list-style-type: none"> • National Sporting Organisations including National Sporting Organisations (NSO) and National Sporting Organisations for people with Disability (NSOD).
<p>How much?</p> <ul style="list-style-type: none"> • Stream 1 - Grants between \$25,000 and \$250,000 to fund local sport and physical activity organisations. • Stream 2 - Grants between \$100,000 and \$1 million to fund the delivery of large scale initiatives through National Sporting Organisations.
<p>When is it open? Grant open: 9am (AEST) 7 January 2019 Grant close: 5pm (AEST) 18 February 2019</p>
<p>Administered by: Sport Australia</p>
<p>Further Information https://www.sportaus.gov.au/grants_and_funding/participation</p>

Grant OPEN or UPCOMING at time of update

Grant not currently available

Document updated – 9 August 2019

Local Sport Grant Program
Purpose To increase regular and on-going participation opportunities in sport and active recreation, address barriers to participation and assist sport clubs provide quality service to their members, with four project types; <ul style="list-style-type: none"> • Sport development • Community sports events • Sport access • Facility development
Who can apply? <ul style="list-style-type: none"> • Incorporated, not-for-profit grassroots sports clubs in NSW • Applications from licenced clubs may be considered providing the project benefits the sport and not the licenced premises • Sports clubs associated with a school, church or university providing they are an incorporated not for profit club in their own right
How much? <ul style="list-style-type: none"> • \$50,000 allocated for projects within each NSW electorate, with set limits for each project type; • Sport development \$2,000 • Community Sports Events \$5,000 • Sport Access \$5,000 • Facility Development \$20,000
When is it open? Closes 24 August 2018.
Administered by: NSW Government (Office of Sport)
Further Information https://sport.nsw.gov.au/clubs/grants/localsport

AMP's Tomorrow Fund
Purpose AMP's Tomorrow Fund awards up to \$1million in grants each year to amazing Australians doing great things in their communities. Grant recipients work in a diverse range of fields and include artists, athletes, social innovators, scientists, educators, disability advocates, technologists, filmmakers, fashion designers, medical researchers and musicians. The grants can be used for a range of activities, including travel, equipment, study costs, research and more.
Who can apply? Australian citizens or permanent residents are eligible to apply for an AMP Tomorrow Fund grant. There are very few restrictions and no age limit.
How much? AMP Tomorrow Fund grants of between \$5,000 and \$100,000 can fund a diverse range of activities. The money could be used for training and travel costs associated with competing in a sport, study assistance while you work on research or small business funding for an innovative idea.
When is it open? Opens 11 April and closes on 27 May, 2019
Administered by: AMP Foundation
Further Information https://www.ampstomorrowfund.com.au/faqs/

Grant OPEN or UPCOMING at time of update

Grant not currently available

Document updated – 9 August 2019

Sport Development Grant Program
Purpose <ul style="list-style-type: none"> • Increase regular and on-going participation in sport • Improve pathways for athlete, coach and official development • Improve sport governance • International and national sporting events projects • Research initiatives
Who can apply? NSW state sporting organisations (SSOs) and state sporting organisations with a disability (SSOD)
How much? \$5,000 - \$50,000. Applicants may apply for multiple projects, but \$50,000 is max available to any one organisation p/a. Applicant must also contribute to the project ie. financial, voluntary labour, donated material / equipment etc
When is it open? Open 15 August 2018 Close 14 September 2018
Administered by: NSW Government (Office of Sport)
Further Information https://sport.nsw.gov.au/clubs/grants/sport-development

Sport4Everyone
Purpose Sport4Everyone funds projects that positively impact (but not limited to): Aboriginal and Torres Strait Islander people, Culturally and Linguistically Diverse (CALD) people, Elderly people, Economically Disadvantaged people, LGBTIQ+ community, People with disabilities and People living remotely
Who can apply? Community-based organisations, schools and clubs.
How much? Sport4Everyone provides grants of up to \$10,000 for projects and activities that will positively impact one or more of the four focus areas <ul style="list-style-type: none"> • Increasing the number of Women & girls in sport • Physical activity – getting more kids, more active • Improving Leadership & decision making through sport • Diversity & Inclusion – increasing participation among minority groups*
When is it open? Sport4Everyone grant round is open on March 28th 2019 and will close at midday on 22nd April 2019
Administered by: Australian Sports Foundation
Further Information https://asf.org.au/resources/sport4everyone-guidelines-2019/

Grant OPEN or UPCOMING at time of update

Grant not currently available

Document updated – 9 August 2019

Flagship Event Fund
Purpose Supports events held in Regional NSW that have been running for more than two years and offers grants specifically to support marketing activities aimed at increasing visibility and attracting visitation to the event from outside its local area.
Who can apply? / Eligibility To be eligible for funding in Round Two, an event must have its third or more event between July – December 2019
How much? One-off grants of up to \$20,000 (excl GST).
When is it open? Application closes midnight (Sydney time) on Sunday, 13 January 2019.
Administered by: Destination NSW
Further Information https://www.destinationnsw.com.au/tourism/business-development-resources/funding-and-grants/regional-flagship-events-program

Holden Home Ground Advantage
Purpose Home Ground Advantage grant applications will be considered for the below: <ul style="list-style-type: none"> • Tangible projects – including upgrading, constructing or improving facilities, upgrading or purchasing equipment, and buying uniforms and other assets • Developing exceptional talent – including special coaching or funding for trips to compete or gain experience
Who can apply? Any sporting club or community organisation that runs or supports sporting activities.
How much? Up to \$250,000. The average value awarded is \$12,500.
When is it open? Summer Round: 1 November 2017 – 31 March 2018 Winter 'Girls' Round: 1 June 2018 – 31 August 2018
Administered by: Holden
Further Information https://www.holden.com.au/discover-holden/home-ground-advantage

Grant OPEN or UPCOMING at time of update

Grant not currently available

Document updated – 9 August 2019

Jetstar FlyingStart
Purpose To help community groups and organisations across Australia to fund a project that will enrich the lives of people in their local community.
Who can apply? Entry is open to not-for-profit community groups and organisations of any size, who can be classified into one of the following categories: Charity, Educational and Health Organisations, Arts Group or Organisation, Sporting Group or Organisation.
How much? Each grant will be worth \$30,000, comprising \$15,000 cash and \$15,000 worth of Jetstar travel.
When is it open? 1 Apr 2019 to 30 Sept 2019
Administered by: Jetstar
Further Information https://www.jetstar.com/au/en/flyingstart

Sporting Schools
Purpose Sporting Schools provides a program for primary schools and a targeted program for Year 7 and 8 students in secondary schools.
Who can apply? <ul style="list-style-type: none"> • Primary Schools with students enrolled from P-6 • Secondary Schools with students in Years 7 and 8 Please read Eligibility Criteria here
How much? <ul style="list-style-type: none"> • Primary Schools - Funding amounts are usually between \$1,000 and \$3,100 per term. • Secondary Schools - Funding amounts are usually between \$1,000 and \$2,500 per term. Funding is determined by whole school enrolment, and expected overall participant numbers. Special Circumstances funding is also available to assist schools with additional costs due to location or demographics.
When is it open? Ongoing – Term 4 is August
Administered by: Sport Australia
Further Information https://sportingschools.gov.au/funding

Grant OPEN or UPCOMING at time of update

Grant not currently available

Document updated – 9 August 2019

Hyundai Goals for Grassroots
Purpose The program is linked to Australia's national football competition – Hyundai A-League, and is in operation during every round of the season; including the Grand Final.
Who can apply? Junior football clubs can apply via the online registration form. All eligible entries will be reviewed by a Hyundai Help for Kids panel and junior club grant recipients will be selected based on the worthiness of the application.
How much? The selected junior club is issued with an array of match day benefits including match tickets and receive a guaranteed \$1,000 grant plus an additional \$1,000 for every goal that the home team scores (up to maximum of \$10,000 per game).
When is it open? The promotion starts at 9:00am AEST on 19 July, 2018 and closes at 11:59pm AEST on 14 April, 2019
Administered by: Hyundai A League
Further Information https://hyundaihelpforkids.com.au/g4gr-registration/

Sunsuper's Dreams for a Better World Community Grants
Purpose Sunsuper's community grants are here to assist your not-for-profit organisation or community group dreams of helping to create brighter futures for Australians or a more active community or support others to live better
Who can apply? To qualify, your dream must aim to make a positive difference in the community, and it must also: <ul style="list-style-type: none"> • benefit a registered community cause, charity group or not-for-profit organisation (and not an individual) • be based in Australia with funds being spent in Australia • be able to be undertaken in the next 12 months • fit with the round theme
How much? <ul style="list-style-type: none"> • Up to \$50,000
When is it open? Round 3: Active Community - Applications close 13 September
Administered by: Sunsuper
Further Information https://dreamsforabetterworld.com.au/community-grants

Grant OPEN or UPCOMING at time of update

Grant not currently available

Document updated – 9 August 2019

Qantas Regional Grants	
Purpose	Our new Regional Grants Program will provide financial, flight and marketing support to community groups and organisations to help further their causes and projects that help deliver direct services or benefits to regional communities.
Who can apply?	Entry is open to Australian based individuals, not-for-profit community groups and organisations of any size, who are seeking funding to help enhance the lives of people in regional communities
How much?	\$5 million in grants - \$1 million each year over five years The Qantas Regional Grants program will offer recipients a combination of: <ul style="list-style-type: none"> • Cash Grant • Flights in kind • Marketing support
When is it open?	2019 14 June - round 1 grant applications open 30 August - round 1 grant applications close October - Qantas Regional Grants panel to assess entries October - successful applicants announced 2020 14 June - round 2 grant applications open
Administered by:	Qantas
Further Information	https://www.qantas.com/au/en/about-us/our-company/in-the-community/qantas-regional-grants.html#about-the-program

The Awesome Foundation	
Purpose	The Awesome Foundation is an international philanthropic organization devoted to forwarding the interest of awesomeness in the universe. Every month TAF award a no-strings-attached grant of \$1,000 to a project deemed 'Awesome.' Projects include – Innovative ideas, ideas with passion and purpose, local projects and community benefit.
Who can apply?	Anyone is eligible for a grant — individuals, groups, and organizations alike. If you can fill out the application form, you can apply.
How much?	\$1,000 grants every month
When is it open?	Ongoing
Administered by:	The Awesome Foundation
Further Information	Sydney - https://www.awesomefoundation.org/en/chapters/sydney Lake Macquarie - https://www.awesomefoundation.org/en/chapters/lakemac

Grant OPEN or UPCOMING at time of update

Grant not currently available

Document updated – 9 August 2019

Volunteers

Volunteer Grants	
Purpose	To support the efforts of volunteers - can be used towards the cost of essential items that help make the work of volunteers easier, safer, and more enjoyable, such as equipment, training, transport and background screening.
Who can apply?	Community organisations including charities, sports clubs and schools
How much?	Grants of between \$1,000 and \$5,000
When is it open?	Opened 7 August -- Closes 2pm 18 September 2018
Administered by:	Dept of Social Services
Further Information	https://www.communitygrants.gov.au/grants/volunteer-grants-2018

Grant OPEN or UPCOMING at time of update

Grant not currently available

Document updated – 9 August 2019

Women and Girls Programs

NSW Women's Week Grants
Purpose The NSW Women's Week grants provide local organisations with an opportunity to deliver a range of education, mentoring and participatory activities that will provide direct benefit to local women and girls.
Who can apply? Charities, not-for-profits, companies limited by guarantee and local government organisations within NSW
How much? up to \$1,000 for small scale events and activities \$1,001 to \$5,000 for larger scale events and activities
When is it open? Open from Monday 15 October 2018 closing 5pm Monday 12 November 2018
Administered by: Women NSW
Further Information https://www.women.nsw.gov.au/news-and-events/nsw-womens-week/nsw-womens-week-grants

Women Leaders in Sport (WLIS)
Purpose The WLIS program aims to provide women with development opportunities to reach their leadership potential in the sports industry.
Who can apply? <ul style="list-style-type: none"> • be involved in a paid or volunteer capacity at a local, state or national level in the sport industry; and • be supported by a sporting organisation that is, or is affiliated with, a national sporting organisation recognised by Sport Australia.
How much? In 2019, the WLIS program offers the following: <ul style="list-style-type: none"> • Leadership Workshops for individuals and organisations, • Development Grants for individuals and organisations, and • A targeted leadership development program for individuals
When is it open? 2019 Applications close: 5:00pm (AEST) 5 September 2018 We anticipate that applications for the 2020 WLIS program will open in August/September 2019.
Administered by: Sport Australia
Further Information https://www.sportaus.gov.au/grants-and-funding/women-leaders-in-sport

Grant OPEN or UPCOMING at time of update

Grant not currently available

Document updated – 9 August 2019

Investing in Women Funding Program
Purpose The program funds NSW organisations to develop and implement projects that support: <ul style="list-style-type: none"> • Improve women's financial wellbeing and security and support diverse and flexible employment opportunities for women and girls • Promote and support a holistic approach to women's health across the lifespan • Support women's engagement through social networks, access to information and building confidence using diverse representation of women and girls.
Who can apply? Applicants must be a legally constituted Australian based entity. This includes: <ul style="list-style-type: none"> • Not-for-profit organisations, including community organisations • Local councils and shires, including regional organisations of councils and consortia of councils • Industry bodies and the private sector working in partnership with the community or government on initiatives directly supporting women and girls.
How much? The 2019 Investing in Women funding program will fund projects according to stages of development. There are three categories of grant funding available for this grant round. A total of \$400,000 is available in this round.
When is it open? Applications open at 9AM (AEST) on Monday 6 May 2019 and close at 11:59PM (AEST) on Sunday 26 May 2019.
Administered by: Women NSW
Further Information https://www.women.nsw.gov.au/commissioning/investing-in-women-funding-program

2020 NSW Women of the Year Awards
Purpose Now in their ninth year, the NSW Women of the Year Awards recognise and celebrate the outstanding contribution made by women across NSW to industry, communities and society.
Who can apply? Anyone can nominate providing they have the consent and full contact details of the woman they are nominating. Self nominations are not accepted. There are seven state-wide Award categories: NSW Premier's Woman of the Year; NSW Aboriginal Woman of the Year; Community Hero; Harvey Norman Young Woman of the Year; Rex Airlines Regional Woman of the Year; NSW Business Woman of the Year; First State Super Lifetime Achievement
How much? Finalists will be invited to attend the event on 5 February 2020 in Sydney and any finalist from outside metropolitan Sydney, Wollongong and Newcastle will be provided with air travel to attend. All finalists will also have their nomination forms forwarded to the Honours Secretariat for consideration in the 'Australian of the Year Awards'.
When is it open? Submit your nomination by 5pm on Friday 25 October 2019
Administered by: Women NSW
Further Information https://www.women.nsw.gov.au/news-and-events/women-of-the-year

Grant OPEN or UPCOMING at time of update

Grant not currently available

Document updated – 9 August 2019