



LOCALITY PLAN



Drawing List

No	Title
1	Title Sheet & Locality plan
2	Development concept - spatial arrangements
3	Playground Concept elements
4	Parkland Concept elements
5	Plant Palette

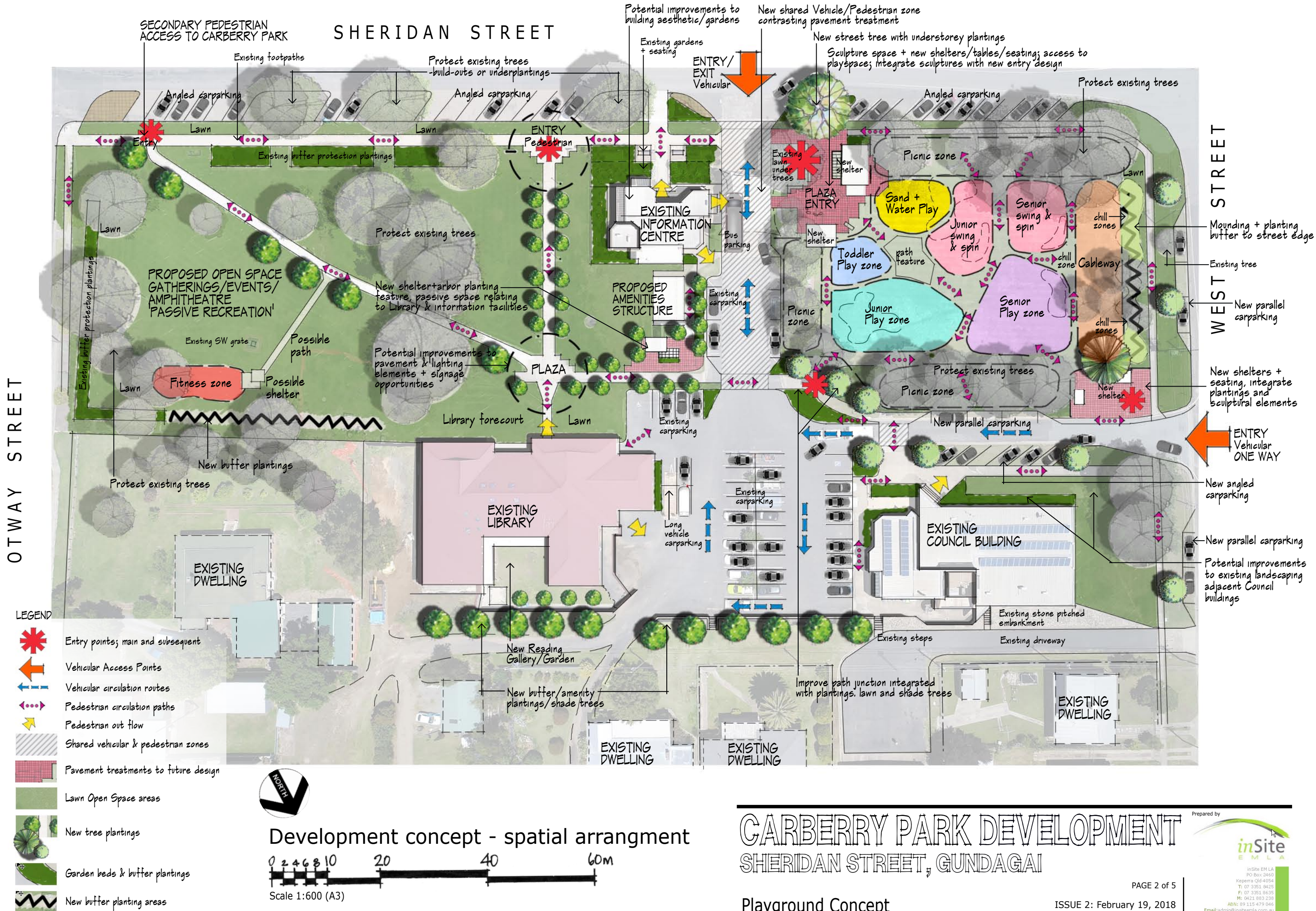
CARBERRY PARK DEVELOPMENT CONCEPT

SHERIDAN STREET,
GUNDAGAI

Development concept

Prepared by





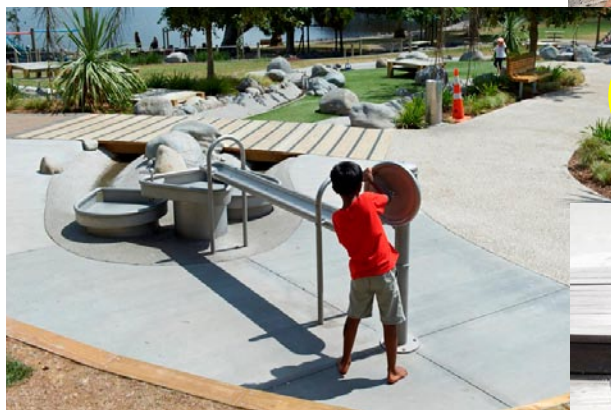


Water gates to create dams and flowing channels

Steel water channels and bowl systems



Sand & water play area with natural elements and range of items for discovery + imaginative play



SAND & WATER PLAY ZONE

Water hand pump with channels



TODDLER PLAY ZONE

Small toddler play items, themed to enhance locality and storyline



Climbing, spinning, sliding stepping, music fun elements relevant to the Junior age group



JUNIOR PLAY ZONE



Musical elements



Spinners



JUNIOR SWING & SPIN ZONE



Example of swing frames and swing seats



Spica spinner



Mammoth Swing



Global motion spinner

SENIOR SWING & SPIN ZONE



Mounded chill out zones or grass lounge integrated with cableway edge (example only)

PLAYSCAPE ENVIRONMENT



CARBERRY PARK PLAYGROUND ARRANGEMENT
Scale 1:600 (A3)



Single cableway system

CABLEWAY

SENIOR PLAY ZONE



Playground concept elements

CARBERRY PARK DEVELOPMENT SHERIDAN STREET, GUNDAGAI Playground Concept

Prepared by



PAGE 3 of 5

ISSUE 2: February 19, 2018

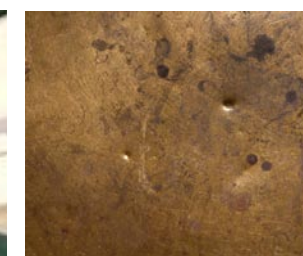


Fitness trails and fitness stations allow opportunities to work on endurance and stamina in a social environment. Each station is signed with specific information on the levels of difficulty and the output required for each activity.

FITNESS ZONE



PARK ENVIRONS - SHELTER STRUCTURES



PARK ENVIRONS - ENTRY PLAZAS, MATERIALS, GROUNDFORM



CARBERRY PARK GENERAL ARRANGEMENT

Scale 1:600 (A3)



Decorative fencing



Water Bubblers



PARK ENVIRONS - AMENITIES, PICNIC ZONES

Parkland concept elements

CARBERRY PARK DEVELOPMENT

SHERIDAN STREET, GUNDAGAI

Playground Concept

Trees



Shrubs + Groundcover



NOTE:
PLANT SPECIES AND QUANTITIES ARE SUBJECT TO CHANGE
PRIOR TO INSTALLATION OF PLANT MATERIAL.

Plant palette

Proposed plant palette

Abbrev	Botanical Name	Common Name
Trees		
1	<i>Araucaria cunninghamii</i>	Hoop Pine
2	<i>Cupaniopsis anarcardiodes</i>	Tuckeroo
3	<i>Elaeocarpus reticulatis</i>	Blueberry Ash
4	<i>Syzygium australe 'Resilience'</i>	Lily pilly
5	<i>Tristaniopsis laurina 'Luscious'</i>	Dwarf Water Gum

Shrubs & Groundcovers		
1	<i>Acmena smithii 'Allyn Magic'</i>	Dwarf Lilly pilly
2	<i>Agapanthus orientalis</i>	Agapathus
3	<i>Azalea indica</i>	Azalea varieties
4	<i>Baeckea virgata 'La Petite'</i>	Dwarf Heath Myrtle
5	<i>Cordline rubra cultivars</i>	Cordylines various
6	<i>Correa reflexa</i>	Tucker Time
7	<i>Dianella caerulea</i>	Native flax
8	<i>Dietes grandiflora</i>	White iris
9	<i>Doryanthes excelsa</i>	Gymea lily
10	<i>Grevillea lanigera</i>	Spider flower
11	<i>Lagerstroemia indica</i>	Crepe Myrtle
12	<i>Lomandra 'Shara'</i>	Mat rush
13	<i>Lomandra hystrix 'Katie Belles'</i>	River mat rush
14	<i>Phormium tenax</i>	NZ Flax varieties
15	<i>Pittosporum tobira Miss Muffet</i>	Dwarf pittosporum
16	<i>Ricinocarpus pinifolius</i>	Wedding bush
17	<i>Trachelospermum jasminoides tricolour</i>	Jasmin

NOTES;

Plant Palette

Plants are selected for ease of maintenance and tolerance to the conditions of the site.

The plant palette shown is predominantly native species which compliments the natural landscape surrounding the site. Water usage is minimised with the selection of native plant species.

Plant species will be used to soften the built form and provide shade for visitors and shall be appropriate for the spatial requirements of the site.