

.....PRIORITY INFRASTRUCTURE PROJECT.....

Proposed WWII Fuel Depot site access and paths program

Cootamundra–Gundagai Regional Council (CGRC), identified the need of provision of site access and paths to the WWII fuel depot site situated beside the Olympic Highway, Cootamundra.

The Ampol site which is well known as the Cootamundra World War II Fuel Depot Site is situated beside the Olympic Highway/Sutton Street at the southern end of the Cootamundra Township, just north of Cootamundra Creek and the railway line as shown in Fig 1.0 below.

The site elements surviving from World War II include five large aviation fuel tanks, the foam house, fuel pump house and steel pipes criss- crossing the site. The five steel fuel storage tanks are the key elements and remain in fair condition. They consist of a single above-ground steel tank (no. 1), two steel and brick-veneer above-ground tanks (nos 2 and 3) and two large concrete and steel tanks covered by earthen mounds (nos 4 and 5).

Post war additions to the site such as underground petroleum storage tanks, tool shed, drum storage shed and platform as well as any asbestos materials have been removed in June 2013 during land remediation works, carried out by Caltex Australia prior to disposal. Soil contamination remediation work undertaken in 2014. Demolitions and remediation works have been undertaken and approved by the Council.

A community heritage study jointly commissioned by former Cootamundra Shire Council and Heritage Branch of the NSW Department of Planning in 2008 identified the former No. 3 IAFD site as significant. The site has been listed as a heritage item in the Cootamundra heritage inventory of the LEP of 2013.

(Source: <http://www.environment.nsw.gov.au/heritageapp/ViewHeritageItemDetails.aspx?ID=5062423>)

Council aims to convert and develop this heritage significant site as a public park with provision of easy access and paths. There is possibility of providing access and path to this site via Olympic Highway and/or via Thompson Street as an alternative access.

The estimated cost of construction of site access and paths for this WWII fuel depot site is \$200k.

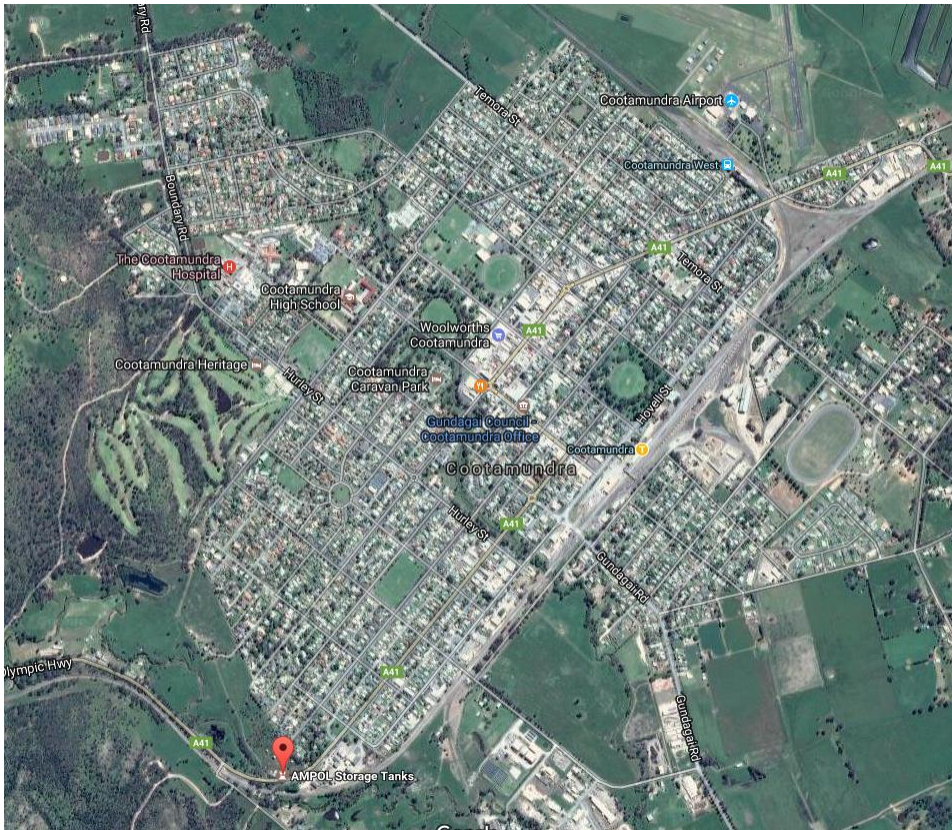


Fig 1.1 Location map of Ampol Site at Cootamundra



Fig 1.2 Site Plan showing 5 fuel storage tanks at Ampol site (Left) and Photo (Right)



Fig. 1.3 Existing access to the site off Olympic Highway



AR Bluett Award Winners:
1953, 1992 & 2014

Cootamundra Office:
81 Wallendoon Street, Cootamundra NSW 2590
Phone: 02 6940 2100 Fax: 02 6940 2127

Gundagai Office:
255 Sheridan Street, Gundagai NSW 2722
Phone: 02 6944 0200 Fax: 02 6940 2127